

Continuous-time random walk: exact solutions for the probability density function and first two moments

by Endah Setyaningsih

Submission date: 01-Sep-2021 02:55PM (UTC+0700)

Submission ID: 1639357323

File name: 2011_PhysicaScripta-Continous_Time.pdf (1.17M)

Word count: 3183

Character count: 13766

1 Continuous-time random walk: exact solutions for the probability density function and first two moments

Kwok Sau Fa¹, Joni Fat²

¹ Departamento de Física, Universidade Estadual de Maringá, Av. Colombo 5790, 87020-900, Maringá-PR, Brazil,

² Jurusan Teknik Elektro - Fakultas Teknik, Universitas Tarumanagara, Jl. Let. Jend. S. Pamman 1, Blok L, Lantai 3 Grogol, Jakarta 11440, Indonesia

E-mail: kwok@dfi.uem.br

Abstract. We consider decoupled continuous time random walk model with finite characteristic waiting time and approximate jump length variance. We take the waiting time probability distribution given by a combination of exponential and Mittag-Leffler function. Using this waiting time probability distribution we investigate diffusion behaviors for all the time. We obtain exact solutions for the first two moments and probability distribution for force-free and linear force cases. Due to the finite characteristic waiting time and jump length variance the model presents, for the force-free case, normal diffusive behavior in the long-time limit. Further, the model can describe anomalous behavior at the intermediate times.

PACS numbers: 02.50.-r, 05.10.Gg, 05.40.-a

5
1. Introduction

The continuous-time random walk (CTRW) model [1] was proved a useful tool for the description of systems out of equilibrium [2, 3]. In fact, the CTRW has been used in a wide range of applications such as earthquake modelling [4], random networks [5], self-organized criticality [6], electron tunneling [7], electron transport in nanocrystalline films [8] and financial stock market [9]. However, analyses of diffusion processes are often restricted to a long-time limit. On the other hand, informations about the initial and intermediate processes are important to distinguish different systems which may lead to the same behavior in the long-time limit. Despite some progress in simple CTRW has been made, more novel approaches need to be developed for the description of CTRW with generic waiting time probability density function (PDF) and external force. In the CTRW model, without external force, the PDF obeys the following equation in Fourier-Laplace space:

$$\rho_{ks}(k, s) = \frac{(1 - g_s(s)) \rho_{k0}(k)}{s(1 - \psi_{ks}(k, s))}, \quad (1)$$

where $\rho_{k0}(k)$ is the Fourier transform of the initial condition $\rho_0(x)$, $\psi_{ks}(k, s)$ is the Fourier-Laplace transform of the jump PDF $\psi(x, t)$ and $g_s(s)$ is the Laplace transform of the waiting time PDF $g(t) = \int_{-\infty}^{\infty} dx \psi(x, t)$. The CTRW can be simplified through the decoupled jump PDF $\psi_{ks}(k, s) = \varphi(k)g_s(s)$ in Fourier-Laplace space, where $\varphi(x) = \int_{-\infty}^{\infty} dt \psi(x, t)$ is the jump length PDF. Under the case of finite jump length variance $\int_{-\infty}^{\infty} dx x^2 \varphi(x)$ [2], the PDF for CTRW can be given by

$$\rho_{ks}(k, s) = \frac{(1 - g_s(s)) \rho_{k0}(k)}{s(1 - \sqrt{1 - Ck^2} g_s(s))} \quad (2)$$

in Laplace-Fourier space, where C has a dimension of length and $\rho_{k0}(k)$ is the Fourier transform of the initial condition $\rho_0(x)$. Although this equation is valid for a finite jump length variance, anomalous diffusion can be produced by it with appropriate choices of $g(t)$. However, this equation is not convenient to be used to study diffusion behavior in finite domains and/or in the presence of external forces. In particular, for long-tailed power-law waiting time PDF $g(t) \sim (t/\tau)^\alpha$ the fractional diffusion equation can be used to study diffusion [2].

Recently, we have made progress in obtaining an integro-differential diffusion equation for the CTRW with any waiting time PDF and external force $F(x)$ [10, 11]:

$$\frac{\partial \rho(x, t)}{\partial t} - \int_0^t dt g(t-t) \frac{\partial \rho(x, t_1)}{\partial t_1} = CL_{FP} \frac{\partial}{\partial t} \int_0^t dt g(t-t) \rho(x, t), \quad (3)$$

where

$$L_{FP} = -\frac{\partial}{\partial x} \frac{F(x)}{k_B T} + \frac{\partial^2}{\partial x^2}, \quad (4)$$

k_B is the Boltzmann constant, and T is the absolute temperature. Some interesting results from (3) are also presented in [12, 13]. We note that equation (3) can also be obtained by the usage of the subordination process [14].

The aim of this work is to investigate the CTRW model with the waiting time PDF given by a combination of exponential and Mittag-Leffler function. It is well-known that the waiting time PDF, given by a pure exponential function, produces normal diffusion process for all the time. The above-mentioned waiting time PDF permits us to investigate the CTRW model with a combination of exponential and stretched exponential function at small times. In particular, we obtain analytical solutions for the first two moments and PDF for force-free and linear force cases. We show that the model describes, for force-free case, normal diffusion regimes at the small and large times, and anomalous diffusion regimes at the intermediate times; this means that the stretched exponential does not modify the normal diffusion process at small times.

2. Mean square displacement, first two moments and probability distribution

In this work we investigate the CTRW model described by equation (3), using the following waiting time PDF:

$$g(t) = b + \lambda b^{1-\alpha} e^{-bt} E_{\alpha,1}(-\lambda t^\alpha), 0 < \alpha \leq 1, b > \lambda^\frac{1}{\alpha}, \quad (5)$$

where b and λ are positive constants and $E_{\mu,\nu}(y)$ is the generalized Mittag-Leffler function defined by [15] $E_{\mu,\nu}(y) = \sum_{n=0}^{\infty} y^n / \Gamma(\nu + \mu n)$, $\mu > 0$, $\nu > 0$. The waiting time PDF $g(t)$ interpolates approximately between the initial exponential form and intermediate power-law behavior, and with exponential behavior in the long-time limit; it is different from the function employed in the previous works [10, 12, 13]. In those cases the functions are given by a combination of power-law and generalized Mittag-Leffler function $g_1(t) = \lambda t^{\alpha-1} E_{\alpha,\alpha}(-\lambda t^\alpha)$, a sum of exponentials $g_2(t) = A \sum_{i=1}^n c_i e^{-a_i t}$ and a combination of power-law and exponential function $g_3(t) = \lambda t^{\nu-1} e^{-dt} / \Gamma(\nu)$, where Γ is the Gamma function; the first one has a power-law tail, then the system exhibits anomalous diffusion in the long-time limit; however, the second one contains multiple characteristic times and it may exhibit power-law behavior with logarithmic oscillation at the intermediate times and exponential behavior in the long-time limit. The third one has approximately initial and intermediate power-law behavior, then the system describes anomalous diffusion at the small and intermediate times, and it exhibits normal diffusion in the long-time limit. In the case $g(t)$, it presents a finite characteristic waiting time given by $\int_0^{\infty} dt t g(t) = [1 + \lambda(1-\alpha)b^{-\alpha}] / (b + \lambda b^{1-\alpha})$; this means that the system describes normal diffusion in the long-time limit.

The definition of the derivative of the q^{th} moment of PDF $\rho(x, t)$ with respect to t is:

$$\frac{d}{dt} \langle x^q \rangle = \int_{-\infty}^{\infty} x^q \frac{\partial \rho(x, t)}{\partial t} dx, \quad (6)$$

where q is a positive integer number.

Force-free case. Substituting (3) into (6), we can obtain the first moment

$$\langle x(t) \rangle = \langle x(0) \rangle \quad (7)$$

1

and the derivative of the second moment with respect to t

$$\frac{d}{dt} \langle x^2(t) \rangle = -g_1(t) \frac{d}{dt} \langle x^2(t) \rangle + 2D \frac{\partial}{\partial t} \int_0^t -g_1(t-t_1) dt_1. \quad (8)$$

Equation (7) shows that the mean square displacement $\langle (x(t) - x(0))^2 \rangle$ is identical to the variance $\langle (x(t) - \langle x(t) \rangle)^2 \rangle$ with $\langle x(0) \rangle = x(0)$.

In order to obtain the mean square displacement we apply the Laplace transform to (8) and using

$$g_s(s) = \frac{b + \lambda b^{1-\alpha}}{(b+s) + \lambda(b+s)^{1-\alpha}}, \quad (9)$$

we obtain

$$s \chi(s) - x^2(0) = \frac{2C(b + \lambda b^{1-\alpha})}{(b+s) + \lambda(b+s)^{1-\alpha} - (b + \lambda b^{1-\alpha})}. \quad (10)$$

Now, using the binomial expansion to (10) yields

$$\begin{aligned} \langle (x(t) - x(0))^2 \rangle &= 2C \int_0^t e^{-bu} \sum_{n=0}^{\infty} \frac{[(b + \lambda b^{1-\alpha})u]^n}{n!} E_{\alpha, 1+(1-\alpha)n}^{(n)}(-\lambda u^\alpha) du, \end{aligned} \quad (11)$$

where

$$E_{\mu, \nu}^{(n)}(y) = \frac{d^n}{dy} E_{\mu, \nu}(y) = \sum_{k=0}^{\infty} \frac{(n+k)! y^k}{k! \Gamma(\nu + \alpha(n+k))}. \quad (12)$$

It is noted that equation (11) shows a complicate form, but for $\alpha = 1$ the Mittag-Leffler function reduces to the exponential function, and the above result reduces to the one of normal diffusion from the ordinary diffusion equation or from the integro-differential diffusion equation (3) with the exponential waiting time PDF [10], $\langle x^2(t) \rangle = \langle x^2(0) \rangle + 2C(b + \lambda)t$. For short times the mean square displacement is given by

$$\langle (x(t) - x(0))^2 \rangle \sim 2C(b + \lambda b^{1-\alpha})t, \quad (13)$$

and for long times it yields

$$\langle (x(t) - x(0))^2 \rangle \sim \frac{C\lambda\alpha(1-\alpha)(1 + \lambda b^{-\alpha})}{b^\alpha [1 + \lambda(1-\alpha)b^{-\alpha}]^2} + \frac{2C(b + \lambda b^{1-\alpha})}{1 + \lambda(1-\alpha)b^{-\alpha}} t. \quad (14)$$

We see that the mean square displacement presents normal diffusive regime for short and large times. In general, the mean square displacement (11) begins with a normal diffusion regime, then it develops anomalous diffusion regime at the intermediate times, and eventually reaches a normal diffusion regime. These regimes can be viewed in figures 1 and 2. In these figures we also compare the analytical solution for the MSD (11) with the power-law function; the MSD is very close to a linear function.

Figure 1. Plots of $(x(t) - x(0))^2$ for $C = 1, b = 0.3, \lambda = 0.15$ and $\alpha = 0.5$. The solid line is obtained from (11). The dashed dotted and dashed lines are the asymptotic curves obtained from (13) and (14), respectively. The dotted line corresponds to the power-law function $0.1022t^{0.9415}$.

Figure 2. Plots of $(x(t) - x(0))^2$ for $C = 1, b = 0.03, \lambda = 0.05$ and $\alpha = 0.7$. The solid lines are obtained from (11). The dashed dotted and dashed lines are the asymptotic curves obtained from (13) and (14), respectively. The dotted line corresponds to the power-law function $0.0935t^{0.9715}$.

Now we consider the exact solution for the PDF $\rho(x, t)$. It can be obtained from

$$[10] \quad \rho_s(x, s) = \frac{\sqrt{1 - g_s(s)}}{2Cs} \exp\left(-\sqrt{|x|} \frac{1 - g_s(s)}{Cs}\right) \quad (15)$$

Substituting (9) into (15) yields

$$\rho(x, t) = \frac{1}{2\pi C(b + \lambda b^{1-\alpha})} \int_0^\infty d\omega \Phi(\omega, x) \cos(\omega t + \theta(\omega, x)), \quad (16)$$

where

$$r_1(\omega) = \sqrt{\omega^2 + b^2}, \quad \theta_1(\omega) = \arccos \frac{b}{r_1}, \quad (17)$$

$$r_2(\omega) = \lambda r_1^{1-\alpha}(\omega) \times \frac{\cos((1-\alpha)\theta_1(\omega)) - \frac{b^{1-\alpha}}{r_1^{1-\alpha}(\omega)} + \sin((1-\alpha)\theta_1(\omega)) + \frac{\omega b^{1-\alpha}}{\lambda r_1^{1-\alpha}(\omega)}}{2} \quad (18)$$

$$\theta_2(\omega) = \arccos \frac{\frac{1}{\lambda r_1} - \frac{\alpha}{r_2(\omega)}}{1}, \quad (19)$$

$$\Phi(\omega, x) = \frac{r_1(\omega)}{\omega} e^{-\sqrt{\frac{|x|}{C(b + \lambda b^{1-\alpha})}} \frac{r_1(\omega)}{\omega}} \frac{\sqrt{r_2(\omega)} \cos \frac{\theta_2(\omega)}{2}}{2} \quad (20)$$

and

$$\theta(\omega, x) = \frac{\theta_2(\omega) - \pi}{2} - \frac{|x|}{C(b + \lambda b^{1-\alpha})} \frac{r_2(\omega) \sin \frac{\theta_2(\omega)}{2}}{2}. \quad (21)$$

The asymptotic expansion of $\rho(x, t)$ (for a given x and $t \gg 1$) is given by

$$\rho(x, t) \sim \frac{1}{2} \frac{1 + \lambda(1-\alpha)b^{-\alpha}}{\pi C(b + \lambda b^{1-\alpha})t} \quad (22)$$

Figure 3. Plots of $\rho(x, t)$ versus x coordinate with $C = 1, b = 0.03, \alpha = 0.5, \lambda = 0.15$, for the force-free case.

Equation (22) shows that the PDF $\rho(x, t)$ has a decay similar to $1/\sqrt{t}$ of the normal diffusion, and independently of the spatial coordinate. This is not a surprise because the waiting time PDF (32) has a finite characteristic waiting time.

Now we show the PDF $\rho(x, t)$ versus x coordinate for different times. In figure 3a, the PDF presents a cusp for $t = 9$ which is a hallmark of the CTRW model for anomalous diffusion process in x coordinate; however, the PDF shows a smooth shape for $t = 35$ due to the fact that the system describes normal regime for large times. In figure 3b, the PDF presents a smooth shape due to the normal diffusion regime for short times. It is worth mentioning that equation (16) is difficult to compute numerically for small values of x . In this case we have checked our numerical results obtained from (16) with those of a numerical inversion of Laplace transform algorithm [16]. Both results are similar, except at the short distance.

Linear force. We now study the case of a linear force $F(x) = -m\omega^2 x$ with the waiting time PDF (5). We first obtain the PDF $\rho(x, t)$; it can be obtained from (3). In order to do so, we employ the method of separation of variables $\rho_n(x, t) = X_n(x)T_n(t)$; substituting it into (3) yields

$$\frac{dT_n(t)}{dt} - \int_0^t g_1(t-t) \frac{dT_n(t_1)}{dt_1} dt_1 = -\mu_n \int_0^t g_1(t-t) T_n(t) dt \quad (23)$$

and

$$CL_{FP} X_n(x) = -\mu_n X_n(x), \quad (24)$$

where μ_n are the eigenvalues. Then, the solution for $\rho(x, t)$ is given by the expansion of eigenfunctions

$$\rho(x, t | x', 0) = e^{\frac{\Phi(x') - \Phi(x)}{2}} \sum_n \psi_n(x') \psi_n(x) T_n(t), \quad (25)$$

where $\Phi(x) = V(x)/k_B T$, $V(x)$ is the potential given by $F(x) = -dV(x)/dx$, and $\psi_n(x) = e^{\Phi(x)/2} X_n(x)$. We note that the eigenvalue equation of the operator L_{FP} , (24), is the same as the one of eigenvalue equation of ordinary Fokker-Planck operator [17]. Now, we only need to solve equation (23) that depends only on time. Applying the Laplace transform to (23) yields

$$T_{sn}(s) = \frac{T_n(0) [1 - g_s(s)]}{s - (1-n)sg_s(s)}. \quad (26)$$

Substituting $g_s(s)$ into (26) we obtain

$$T_n(t) = 1 - n \int_0^t e^{-bu} \sum_{k_1=0}^{\infty} \frac{[(1-n)(b + \lambda b^{1-\alpha})u]^{k_1}}{k_1!} E_{\alpha, 1+(1-\alpha)k_1}^{(k_1)}(-\lambda u^\alpha) du, \quad (27)$$

Figure 4. Plots of $\rho(x, t)$ versus x coordinate with $C = 1, b = 0.03, \alpha = 0.5, \lambda = 0.15$, for the linear force case.

where we have omitted the term $T_n(0)$. Then, the solution for $\rho(x, t | x', 0)$ is given by

$$\rho(x, t | x', 0) = \frac{m\omega^2}{2\pi k_B T} \sum_{n=0}^{\infty} \frac{T_n(t)}{2^{2n} n!} H_n \left(\frac{x - x'}{\sqrt{2}} \right) e^{-\frac{x^2 - x'^2}{2}}, \quad (28)$$

where $\mathfrak{x} = x - x'$, $\mu_n = n$ and $H_n(y)$ denotes the Hermite polynomials. It is worth mentioning that $T_n(t)$ reduces to $T_n(t) = \exp[-(a + \lambda)nt]$ for $\alpha = 1$, which is the solution of the ordinary diffusion equation. In figure 4 we show the PDF for different times.

To obtain the first two moments we substitute (3) into (6), and we obtain the derivative of the first moment of PDF $\rho(x, t)$ with respect to t

$$\frac{d \langle x(t) \rangle}{dt} = \int_0^t g(t-t_1) \frac{d \langle x(t_1) \rangle}{dt_1} dt_1 + \frac{C}{k_B T} \int_0^t g(t-t_1) \int_{-\infty}^{\infty} F(x) \rho(x, t) dx dt_1 \quad (29)$$

and the derivative of the second moment of PDF $\rho(x, t)$ with respect to t

$$\frac{d \langle x^2(t) \rangle}{dt} = \int_0^t g(t-t_1) \frac{d \langle x^2(t_1) \rangle}{dt_1} dt_1 + 2C \int_0^t g(t-t_1) \int_{-\infty}^{\infty} x F(x) \rho(x, t) dx dt_1. \quad (30)$$

Now we apply the Laplace transform to (29) and (30), and we arrive at

$$\langle x(s) \rangle_s = \frac{\langle x(0) \rangle [1 - g_s(s)]}{s} \quad (31)$$

and

$$\langle x^2(s) \rangle_s = \frac{\langle x^2(0) \rangle [1 - g_s(s)]}{s [1 + g_s(s)]} + \frac{2C g_s(s)}{s [1 + g_s(s)]}. \quad (32)$$

We note that equation (31) can be solved for any waiting time PDF, and the solution is given by

$$\langle x(t) \rangle = \langle x(0) \rangle \left[1 - \int_0^t g(t_1) dt_1 \right] \quad (33)$$

In the case of $g(t)$ (5), we have

$$\langle x(t) \rangle = \langle x(0) \rangle \left[1 - \int_0^t (b + \lambda b^{1-\alpha}) e^{-bt} E_{\alpha, 1}(-\lambda t^\alpha) dt \right] \quad (34)$$

and

$$\langle x^2(t) \rangle = \langle x^2(0) \rangle + 2 \frac{k_B T}{m\omega^2} \int_0^t \sum_{n=0}^{\infty} \frac{[-(b + \lambda b^{1-\alpha}) t]^n}{n!} E_{\alpha, 1}(-\lambda t^\alpha) dt. \quad (35)$$

1

Continuous time random walk: Exact solutions

19

0 $n=0$

$n!$

1

$\alpha, 1+(1-\alpha)n$

1

1

8

It is found that the first two moments have complicated forms associated with the Mittag-Leffler function. For $\alpha = 1$ the Mittag-Leffler function reduces to the exponential function, and all the above results reduce to those of the ordinary diffusion equation. The thermal equilibrium is reached when $t \rightarrow \infty$, then we have $\langle x^2(\infty) \rangle = k_B T / m\omega^2$. If the system satisfies the special initial spatial condition as $\langle x(0) \rangle = 0$ and $\langle x^2(0) \rangle = k_B T / m\omega^2$, $\langle x(t) \rangle = 0$ and $\langle x^2(t) \rangle = k_B T / m\omega^2$ for all the time; therefore, average of displacement and its second moment are independent of time.

3. Conclusion

We have investigated the uncoupled CTRW model with the waiting time PDF given by (5) for force-free and linear force cases. We have presented analytical solutions for the first two moments and probability distribution. We have shown, for the force-free case, the system presents normal regimes at the small and large times, but it presents a deviation from the normal regime at the intermediate times; we note that the solutions for the first two moments can be described in terms of the generalized Mittag-Leffler function. In figure 3 we show the PDF, and it presents cusp for the intermediate times which is associated with the anomalous regime; this result reinforces the fact that the cusp present in the PDF for anomalous regime is typical for the CTRW model (see the cusp present in the PDFs for other waiting time PDFs [10, 3]). For the linear force $F(x) = -m\omega^2 x$, all the solutions presented in this work are described in terms of the generalized Mittag-Leffler function.

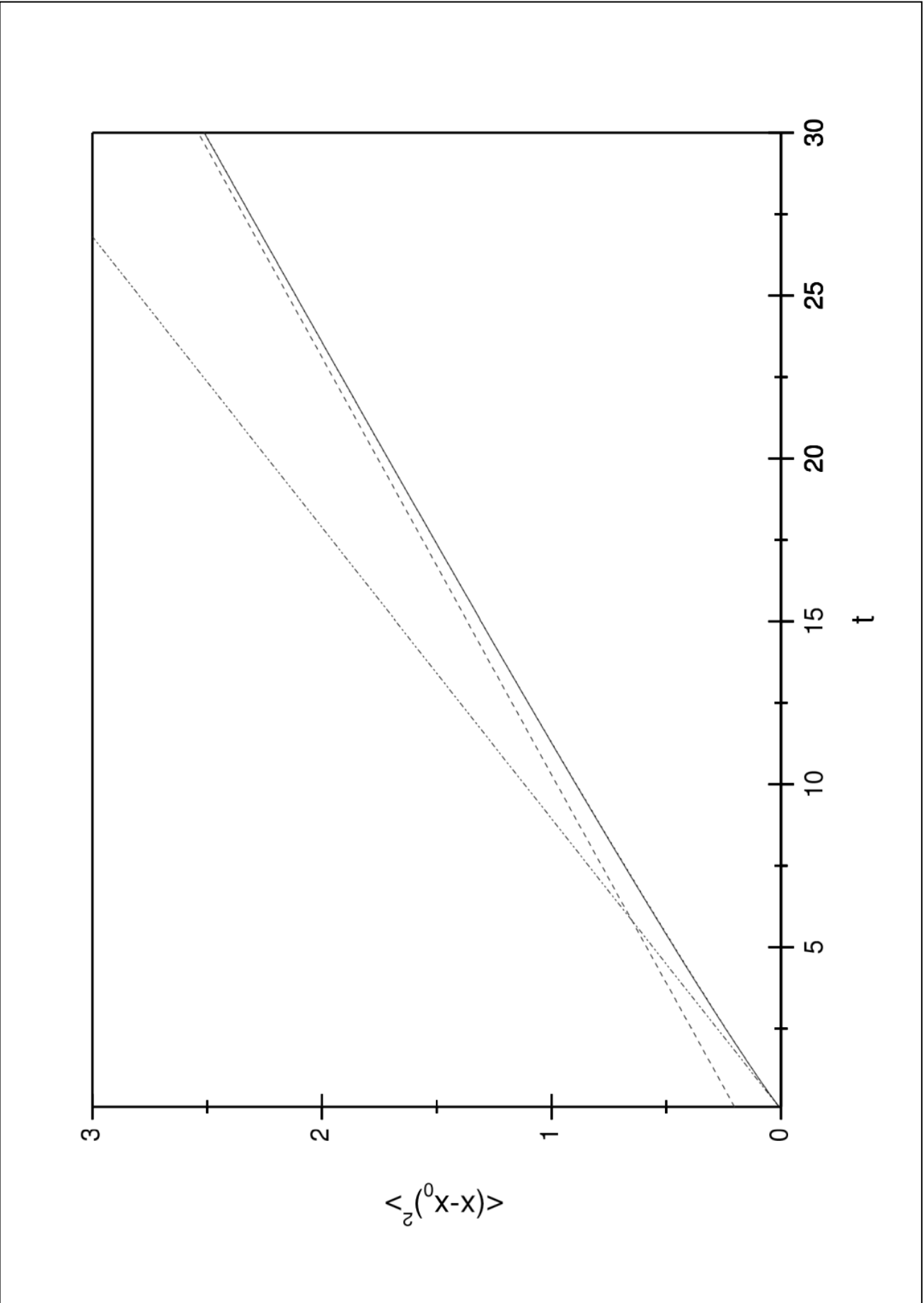
Acknowledgments

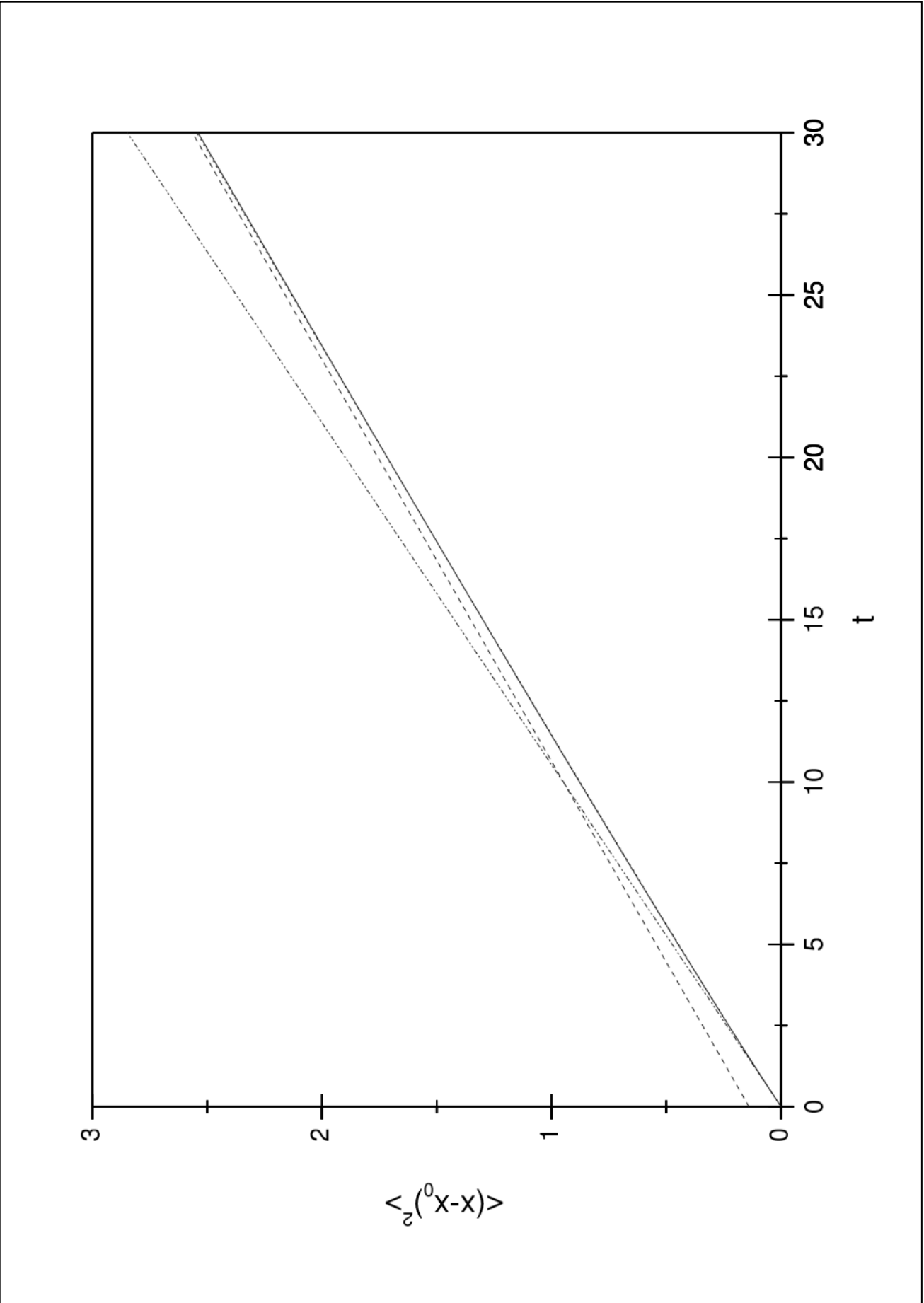
The author acknowledges partial financial support from the Conselho Nacional de Desenvolvimento Científico e Tecnológico (CNPq), Brazilian agency.

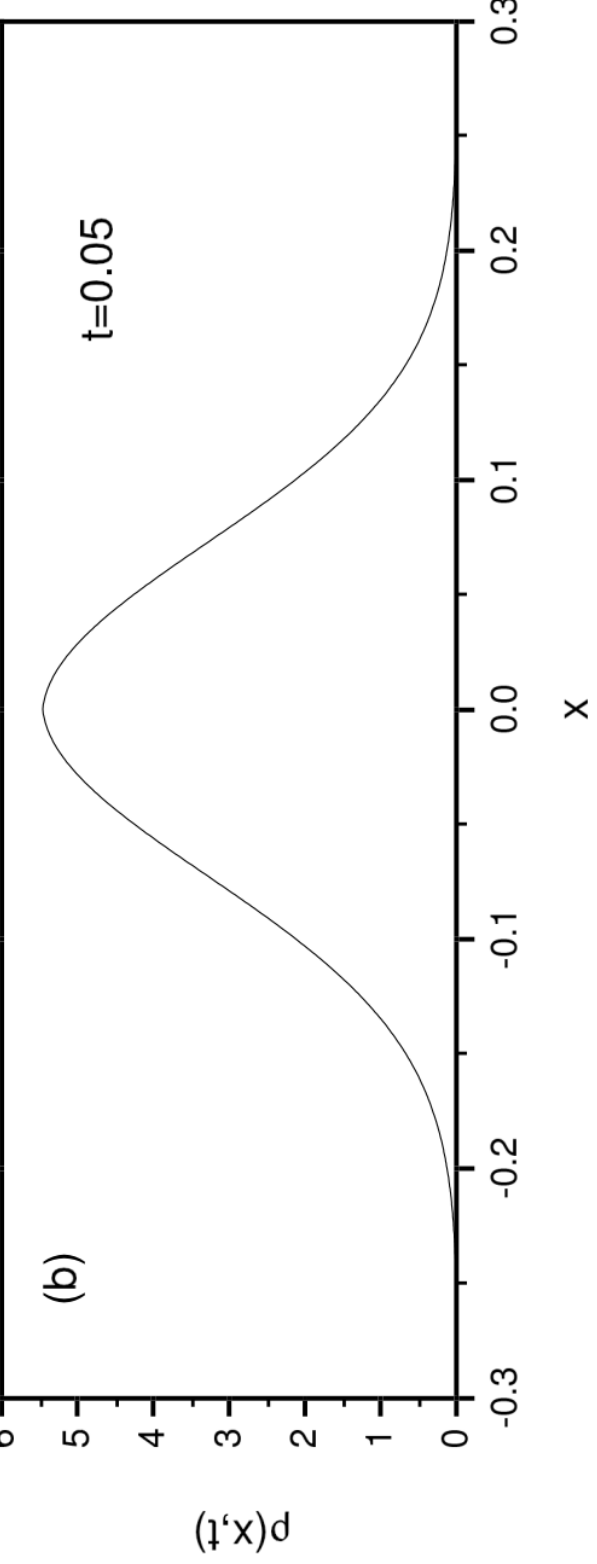
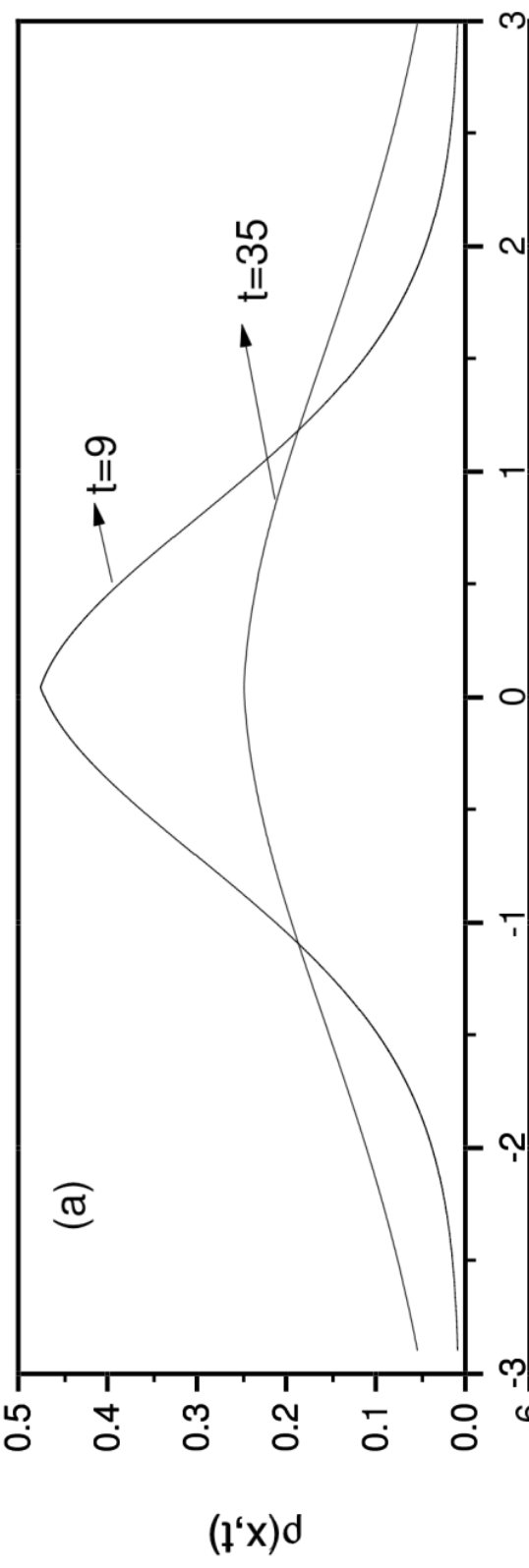
References

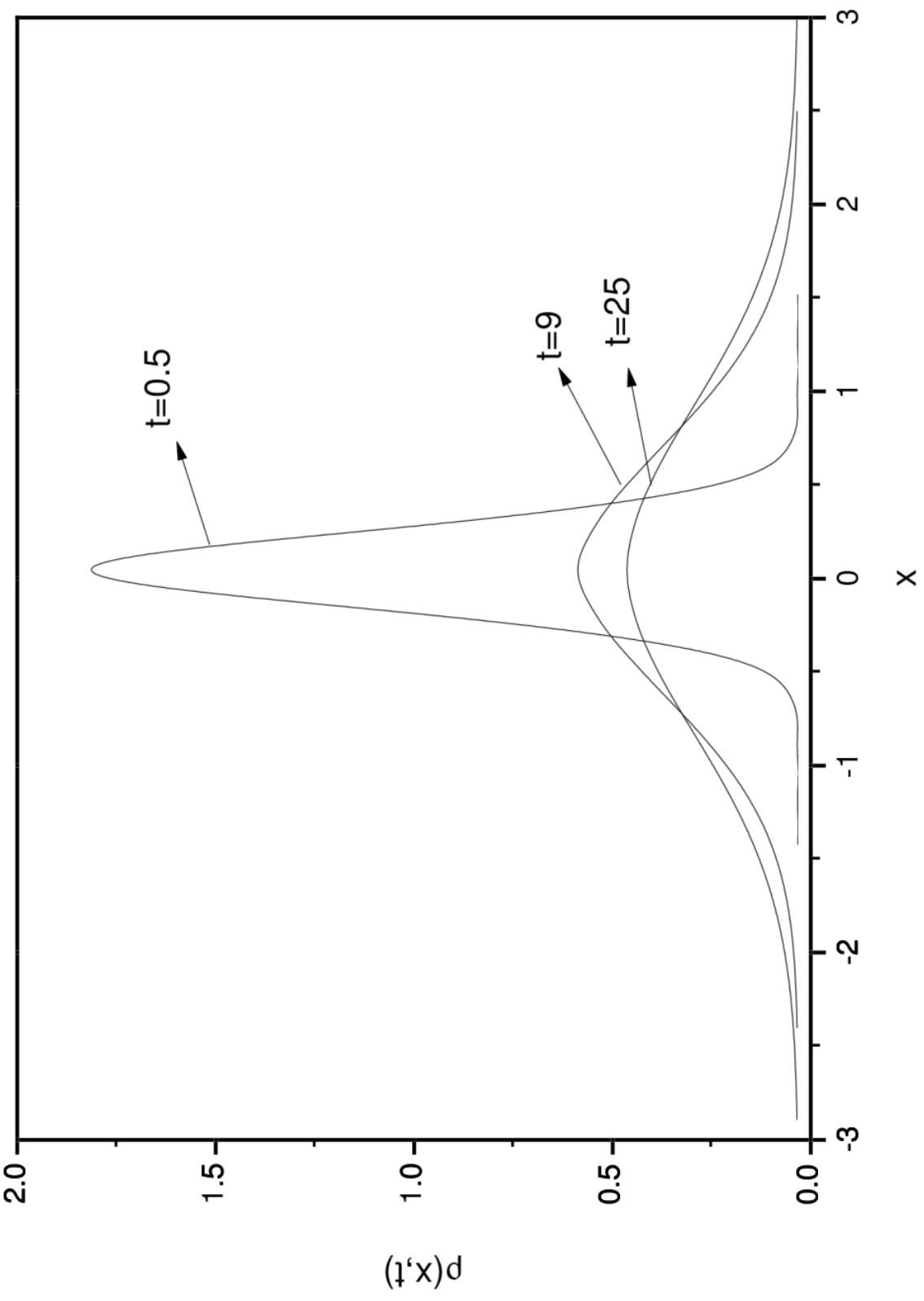
- [1] Montroll E W and Weiss G H 1965 *J. Math. Phys.* 6 167
- [2] Metzler R and Klafter J 2000 *Phys. Rep.* 339 1
- [3] Scher H and Lax M 1973 *Phys. Rev. B* 7 4502
Scher H and Montroll E 1975 *Phys. Rev. B* 12 2455
- [4] Helmstetter A and Sornette D 2002 *Phys. Rev. E* 66 061104
Corral Á 2006 *Phys. Rev. Lett.* 97 178501
- [5] Berkowitz B and Scher H 1997 *Phys. Rev. Lett.* 79 4038
- [6] Boguñá M and Corral Á 1997 *Phys. Rev. Lett.* 78 4950
- [7] Gudowska-Nowak E and Weron K 2001 *Phys. Rev. E* 65 011103
- [8] Nelson J 1999 *Phys. Rev. B* 59 15374
- [9] Scalas E, Gorenflo R and Mainardi F 2000 *Physica A* 284 376
Mainardi F, Raberto M, Gorenflo R and Scalas E 2000 *Physica A* 287 468
Scalas E 2006 *Physica A* 362 225
- [10] Fa K S and Wang K G 2010 *Phys. Rev. E* 81 011126
- [11] Fa K S and Wang K G 2010 *Phys. Rev. E* 81 051126

- [12] Fa K S and Mendes R S 2010 *J. Stat. Mech.* P04001
- [13] Fa K S 2010 *Phys. Rev. E* 82 012101
- [14] Sokolov I M and Klafter J 2005 *Chaos* 15 026103
- [15] Carpinteri A and Mainardi F 1997 *Fractals and Fractional Calculus in Continuum Mechanics* (Wien, Springer, Wien), pp. 223-276.
- [16] Stehfest H 1970 *Commun. ACM* 13 47
Stehfest H 1970 *Commun. ACM* 13 624
- [17] Risken H 1996 *The Fokker-Planck Equation* (Berlin, Springer-Verlag)









Continuous-time random walk: exact solutions for the probability density function and first two moments

ORIGINALITY REPORT

20%
SIMILARITY INDEX

6%
INTERNET SOURCES

19%
PUBLICATIONS

%
STUDENT PAPERS

PRIMARY SOURCES

- 1** www.science.gov
Internet Source **3%**
- 2** KWOK SAU FA. "ANALYSIS OF A GENERALIZED LANGEVIN EQUATION WITH FRACTIONAL DERIVATIVE, NONLOCAL DISSIPATIVE FORCE AND LINEAR EXTERNAL FORCE", Fluctuation and Noise Letters, 2012
Publication **2%**
- 3** Trifce Sandev, Živorad Tomovski. "Chapter 4 Fractional Diffusion and Fokker-Planck Equations", Springer Science and Business Media LLC, 2019
Publication **2%**
- 4** Vicenç Méndez, Sergei Fedotov, Werner Horsthemke. "Reaction–Transport Systems", Springer Science and Business Media LLC, 2010
Publication **1%**
- 5** Trifce Sandev, Weihua Deng, Pengbo Xu. "Models for characterizing the transition **1%**

among anomalous diffusions with different diffusion exponents", Journal of Physics A: Mathematical and Theoretical, 2018

Publication

6

Vicenç Méndez. "Random Walks and Mesoscopic Reaction-Transport Equations", Springer Series in Synergetics, 2010

Publication

1 %

7

hdl.handle.net

Internet Source

1 %

8

Laskin, N.. "Fractional Poisson process", Communications in Nonlinear Science and Numerical Simulation, 200309/12

Publication

1 %

9

"Anomalous Transport", Wiley, 2008

Publication

1 %

10

Kwok Sau Fa. "A class of integro-differential Fokker-Planck equations with space-dependent coefficient", Physica Scripta, 2021

Publication

1 %

11

Ralf Metzler, Joseph Klafter. "The random walk's guide to anomalous diffusion: a fractional dynamics approach", Physics Reports, 2000

Publication

1 %

12

Lathi, B.P.. "Linear Systems and Signals", Oxford University Press

<1 %

13 Springer Monographs in Mathematics, 2014. <1 %
Publication

14 www.coursehero.com <1 %
Internet Source

15 Kwok Sau Fa. "Anomalous diffusion in a
generalized Langevin equation", Journal of
Mathematical Physics, 2009 <1 %
Publication

16 SIGERU OMATU, AKIRA KIKUCHI, TAKASI
SOEDA. "The optimal smoothing estimators
based on the Wiener-Hopf theory",
International Journal of Systems Science, 2007 <1 %
Publication

17 Aleksei V. Chechkin, Michael Hofmann, Igor M.
Sokolov. "Continuous-time random walk with
correlated waiting times", Physical Review E,
2009 <1 %
Publication

18 www.tau.ac.il <1 %
Internet Source

19 Albert Compte, Ralf Metzler, Juan Camacho.
"Biased continuous time random walks
between parallel plates", Physical Review E,
1997 <1 %
Publication

20

Iddo Eliazar. "On the generation of anomalous and ultraslow diffusion", Journal of Physics A Mathematical and Theoretical, 10/07/2011

Publication

<1 %

21

Kwok, Sau Fa. "Langevin equation with multiplicative white noise: Transformation of diffusion processes into the Wiener process in different prescriptions", Annals of Physics, 2012.

Publication

<1 %

22

Trifce Sandev, Živorad Tomovski. "Chapter 7 Fractional Generalized Langevin Equation", Springer Science and Business Media LLC, 2019

Publication

<1 %

23

digitalassets.lib.berkeley.edu

Internet Source

<1 %

24

Jaume Masoliver, Miquel Montero, George H. Weiss. "Continuous-time random-walk model for financial distributions", Physical Review E, 2003

Publication

<1 %

25

Liu, Jian, and Jing-Dong Bao. "Effective Jump Length of Coupled Continuous Time Random Walk", Chinese Physics Letters, 2013.

Publication

<1 %

26 Metzler, R.. "Stochastic foundation of normal and anomalous Cattaneo-type transport", Physica A: Statistical Mechanics and its Applications, 19990615 $<1\%$
Publication

27 Ralf Metzler. "Anomalous Stochastic Processes in the Fractional Dynamics Framework: Fokker-Planck Equation, Dispersive Transport, and Non-Exponential Relaxation", Advances in Chemical Physics, 01/01/2001 $<1\%$
Publication

28 V. I. Arkhipov, A. I. Rudenko. "Drift and diffusion in materials with traps", Philosophical Magazine B, 2006 $<1\%$
Publication

29 www.cea-unesp.org.br $<1\%$
Internet Source

30 "Critical Phenomena in Natural Sciences", Springer Science and Business Media LLC, 2006 $<1\%$
Publication

31 Haus, J.W.. "Diffusion in regular and disordered lattices", Physics Reports, 198706 $<1\%$
Publication

32 Masoliver, J.. "The continuous time random walk formalism in financial markets", Journal $<1\%$

of Economic Behavior and Organization, 200612

Publication

Exclude quotes On

Exclude matches Off

Exclude bibliography On