

Improved Ibu Endah-Pak Henry

by Endah Setyaningsih

Submission date: 03-Nov-2023 10:13AM (UTC+0700)

Submission ID: 2215901733

File name: ICCSCE.2018.8685022_2.pdf (634.52K)

Word count: 2885

Character count: 15068

Improving Focus and Concentration in the Classroom while Studying with Lighting Arrangement and Brainwave Stimulation

Henry Candra
Universitas Trisakti
Jakarta, Indonesia
henrycandra@trisakti.ac.id

¹⁹Endah Setyaningsih
Universitas Tarumanagara
Jakarta, Indonesia
endahs@fti.untar.ac.id

²⁰Jeanny Pragantha
Universitas Tarumanagara
Jakarta, Indonesia
jeannyp@fti.untar.ac.id

Rifai Chai (SMIEEE)
Swinburne University of
Technology,
Melbourne, Australia
rchai@swin.edu.au

Abstract—The combination of brain wave frequency can be used to describe the level of attention and comfort of a person to a certain activity including the level of focus and concentration while studying in a classroom which represented by the increase of alpha and beta frequency band. These brain wave patterns can be manipulated using stimulation that resonates with the brain waves. The stimulation can be combined with the arrangement of the lighting system in the classroom to improve the result. A research was conducted to evaluate the brain wave frequency patterns of a participant in a classroom which was stimulated using binaural audio stimulation and a lighting arrangement to increase the focus and concentration of the participant. The results show that the alpha and beta frequency band represented as a relative wavelet energy are increased and distributed throughout the whole brain while the theta relative wavelet energy frequency band shows a trend of decrease.

Index Terms— Electroencephalography, focus, concentration, lighting arrangement.

I. INTRODUCTION

Electroencephalogram (EEG) can be used to detect the emotional state of a person by mapping it into the conceptual emotional dimension known as the Circumplex Model of Russell (Russell's Circumplex model). By using the circumplex model, the human emotions can be mapped to a two-dimensional quadrant consisting of Arousal (enthusiasm) and Valence (comfort) [1]. This emotional state can be measured to determine the level of interest and attention to a certain activity such as attending a lesson in the classroom. EEG has also been used to monitor the children with learning difficulties, i.e. difficulty in concentrating, people in severe stress, or difficulty to sleep (insomnia), which were combined with an application to check, and improve the brain function and the brain waves [2]. The result is supported by the research conducted by Corballis [3] which emphasizes that a formal education activates the left-brain hemisphere (logic and mathematics), while an informal education, courses and skills, such as music and art activate the right hemisphere (intuition and creativity).

Every person has a unique and consistent brain wave pattern. Its uniqueness can be seen from the combination of the five brain wave patterns (i.e. delta, theta, alpha, beta, and gamma) at a certain time [4]. The composition of brain waves

also determines a person's level of consciousness. This means that the brain waves always change and have different patterns in various daily activities such as sleep, wake up, rest, and work. The brain wave pattern of each person is unique but does not mean that the pattern is constant all the time. By using certain "activation" and "stimulation" techniques, the composition and combination of brain wave patterns of the humans can be changed (manipulated) both by themselves and or with the help of others. These stimulations can increase focus and concentration on a learning activity, improve sleep function, and prevent insomnia [5].

Furthermore, the focus and concentration or attention of a person when attending a lesson in a class is also influenced by the level of lighting in the classroom [6]. It is stated that the lighting system has a positive influence on the level of concentration of a student. Therefore, it is important to have a proper lighting to improve focus and concentration in learning activity.

This paper described the method to improve the focus and concentration of a student while studying in a classroom by using lighting arrangement and brainwave stimulation using binaural audio which also becomes the novelties that is demonstrated in this paper. Using proper combination of lighting arrangement and the brainwave stimulation, the focus and concentration of a person while studying can be improved to a certain level.

II. METHODS AND DATA COLLECTION

The experiment was conducted in a small classroom which was equipped with a stereo sound system for brainwave stimulation, an audio video presentation equipment, and a lighting system that has 3 different types of illumination ¹⁸ with different color temperature: cool daylight (6500 K), cool white (4500 K), and warm white (3000 K). The lighting system has been measured to meet the lighting standard. The lighting standard used in this research is defined by the Illuminating Engineering Society (IES), which declares that a proper luminance for a workspace for studying activity is 300 Lux [7], [8].

To prepare a proper lighting for the experiment classroom, a simulation has been conducted using DiaLux software for the

lighting design to determine the type and the number of the lamp to be used, and the layout of the lighting system so that the required illuminance standards can be achieved. Figure 1 shows the arrangement of the lighting system with 3 different types of illumination.



Fig. 1. The lighting system arrangement with 3 types of illumination.

Some participants were asked to watch a video presentation of mathematical subject in 3 consecutive sessions. After the end of each session, the participants were asked to solve some mathematical problems related to the presentation. The sessions were divided as follows: in the first session the participants were asked to choose 1 out of 3 different lightings that is the most comfortable for them. In the second session they were watching the next video using the selected lighting illumination without any stimulation. In the last session a brainwave audio stimulation was added to the room while the participants watched the video.

During all the presentation sessions, the EEG of the participants were recorded with 16 channel EEG equipment with 256 samples/sec. 10/20 international system was used for the EEG configuration as shown in Fig. 2. The sessions were also recorded with 3 video cameras from 3 different angles, that were at the rear left, front, and rear right side of the participants. The participants also filled some questionnaires after the last session to judge their arousal and valence emotion for each session.

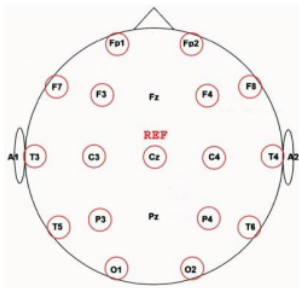


Fig. 2. 16 Channels EEG using 10/20 international system.

The recorded raw EEG was then pre-processed to remove artifacts. Each channel was filtered with 50 Hz notch filter and 5 to 45 Hz band pass filter, averaged to common reference [9].

To obtain the frequency distribution of the pre-processed EEG data, Discrete Wavelet Transform (DWT) was applied. The DWT has the advantages of multiscale zooming, multirate filtering, and time-frequency localization to extract the information from non-stationary EEG signals. According to [10] the DWT can be calculated as follows:

$$DWT(x(t); a, n) = \int_{-\infty}^{\infty} x(t) \frac{1}{\sqrt{2^a}} \psi\left(\frac{t - 2^a n}{2^a}\right) dt \quad (1)$$

where $2^a n$ and 2^a are the time localization and scale respectively, while ψ defines the mother wavelet function. In other word, the DWT is a filtering process using a dyadically shifted and scaled mother wavelet.

The wavelet energy $E(a)$ represents the energy of the wavelet coefficient localized at the a^{th} level of decomposition calculated as follows,

$$E(a) = |C_a|^2 = \sum C_a^2[n] \quad (2)$$

where C_a denotes the wavelet coefficients at the a^{th} decomposition level. C_a can be either wavelet approximation (x_{Aa}) or detail (x_{Da}).

The wavelet energy is then normalized against the total wavelet energy to obtain a probability mass function as follows,

$$p(a) = \frac{E(a)}{\sum_{k=1}^K E(k)} \quad (3)$$

where K denotes the number of discrete wavelet decompositions, $p(a) \in \{0, 1\}$ and $\sum_a p(a) = 1$. The normalized measure is known as the Relative Wavelet Energy (RWE) [10].

In this experiment the daubechies 5 (db5) was used as the mother wavelet. The EEG frequency band can be computed using the wavelet detail coefficients giving:

- a. 5th detail coefficients \approx Delta (3 - 4Hz);
- b. 4th detail coefficients \approx Theta (5 - 8Hz);
- c. 3rd detail coefficients \approx Alpha (9 - 16Hz);
- d. 2nd detail coefficients \approx Beta (17 - 32Hz); and
- e. 1st detail coefficients \approx Gamma (33 - 64Hz).

The RWE of each frequency band of the EEG data can be represented in the form of histogram bar to compare the energy level of each frequency band. The Delta and Gamma bands were not included in the histogram as our concern in the research are only to the theta, alpha, and beta bands that related to the focus and concentration.

In the next step, the RWE of each theta, alpha, and beta frequency from all 16 channels are accumulated to obtain total RWE for each frequency band. The total RWE of each frequency band is then normalized and represented as histogram of total RWE for each frequency band. The total

RWE histogram are then compared between the RWE before stimulation and after stimulation to observe the effect of the stimulation.

The experiment used an audio stimulation using binaural algorithm [11], [12]. The binaural algorithm can be described as follows. Two frequencies are generated at the same time to stimulate the right and left ears where the frequency of both signals is matched with the brain wave frequency to be stimulated. For example, in the left ear a 200 Hz signal is generated, while at the right side a 200 Hz signal added with the brain waves frequency to be stimulated, i.e., 8 Hz alpha wave. Therefore, signal frequency in the right ear is $200 + 8 = 208$ Hz. This process is continuously carried out between alpha and beta band frequency repetitively. As a result, the brain will respond to these different frequencies and resonate in the given frequency stimulation [13], [14].

III. RESULTS AND DISCUSSION

The total RWE of 16 channels EEG for each frequency theta (θ), alpha (α), and beta (β) band before and after stimulation from 5 participants are represented in Table I.

TABLE I. TOTAL RWE OF 16 CHANNELS EEG FOR EACH FREQUENCY BAND BEFORE AND AFTER STIMULATION FROM 5 PARTICIPANTS

PARTICIPANT	TOTAL RWE OF 16 CHANNELS EEG FOR EACH FREQUENCY BAND BEFORE AND AFTER STIMULATION					
	BEFORE (%)			AFTER (%)		
	θ	α	β	θ	α	β
1	68.4	17.9	13.7	58.8	22.7	18.5
2	65.9	19.3	14.8	54.2	31.5	14.3
3	63.0	25.7	11.3	35.6	46.4	18.0
4	70.0	23.3	6.7	62.1	28.7	9.2
5	43.6	24.9	31.5	18.7	63.0	18.3

Table I shows that the theta frequency bands for all the participant are reduced after the stimulation. On the contrary, the alpha frequency bands are increased for all 5 participants after the stimulation. While the beta frequency bands are increased for most of the participants with an exception for 2nd and 5th participant. Based on the answer in questionnaire, 2nd and 5th participant had the feeling of drowsiness at the last session. This might explain the reduction of the beta frequency bands. The difference of RWE for each frequency band are also represented in Table II. The difference is calculated by

subtracting the RWE of after stimulation to the RWE before stimulation and compared to RWE before the stimulation which produce positive and negative difference in ratio. A negative difference shows a decrease of the RWE frequency band, while a positive difference presents an increase of the RWE frequency band, vice versa.

TABLE II. THE DIFFERENCE OF RWE FOR EACH FREQUENCY BAND BEFORE AND AFTER STIMULATION FROM 5 PARTICIPANTS

Participant	Difference (%)		
	θ	α	β
1	-16.3	21.0	26.0
2	-21.4	38.8	-4.3
3	-76.7	44.6	37.1
4	-12.6	18.7	27.1
5	-133.7	60.5	-71.9

Table II shows that the RWE of alpha frequency band is increased significantly for all the 5 participants. While the RWE of theta frequency band decrease moderately among all the participants. The difference the RWE of beta frequency band varies between the participants. The results suggest that the alpha frequency band has more impact in the alteration of the focus and concentration state.

Figure 3 illustrates the variation of RWE for each frequency band together with the difference for each RWE of the frequency band illustrated as the histogram of Total RWE from the first participant.

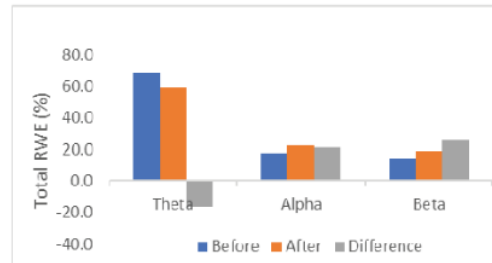


Fig. 3. Histogram Total RWE for each frequency band and its difference from the first participant.

Further analysis was conducted by mapping the RWE frequency band of each channel to the top view of the scalp to illustrate the distribution of each frequency on the scalp before and after the stimulation. The illustration is shown in Fig. 4 which was developed from the EEG data of 4th participant.

Figure 4 shows that the distribution of the theta frequency band before the stimulation is moderate and is decreased after the stimulation.

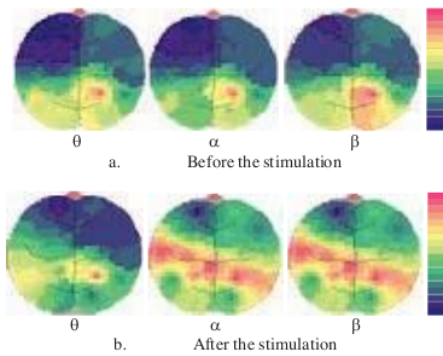


Fig. 4. The mapping of RWE frequency band to the top view of the scalp before and after stimulation.

Conversely, the distribution of alpha band is less before the stimulation. However, it is increased after the stimulation. The similar circumstance occurs to the beta frequency band which is also increased after the stimulation. Therefore, the analysis of the mapping supports the results that has been discussed in Table I.

Further analysis of the mapping shows that the distribution of the RWE frequency band before the stimulation only take place on the back side of the scalp which then change in effect of the stimulation and the distribution of the RWE frequency bands expand to almost the area of the scalp. This means that the stimulation also affects to the whole area of the brain.

IV. CONCLUSIONS AND FURTHER WORK

The research that has been conducted to improve the focus and concentration of a person by using the lighting arrangement and audio stimulation shows positive results. The increase of the focus and concentration are related to the relative wavelet energy of each frequency which shows a trend of increase for the alpha and beta frequencies and the decrease of theta band. The rise of alpha frequency is more dominant than the beta band, while the decline of theta band is generally taking place. The effect of the stimulation also activates the whole area of the brain which is inline with the increase of alpha and beta band and the decrease of theta band.

Further direction is to implement the proposed method to a more significant numbers of participants to validate the results. It will also implement to a more varies of courses such as science, language, and social study in a more spacious classroom.

ACKNOWLEDGMENT

The research was funded by Trisakti University and DRPM, Ministry of Research, Technology, and Higher Education of the Republic of Indonesia, Grant Number 091/A/LPT/USAKTI/IV/2018.

REFERENCES

- [1] Candra, H., et al., "Recognizing emotions from EEG subbands using wavelet analysis". Pages 6030–6033 of: Proc. IEEE 37th Annu. Int. Conf. Eng. Med. Biol. Soc. Berner, F., "Cerebral and Cerebellar Potentials", *Physiological Review*, 38, 357-388, 2015.
- [2] Moghimi, S., et al., "A Review of EEG-Based Brain-Computer Interfaces as Access Pathways for Individuals with Severe abilities." *Assistive Technology* 25 (2): 99-110, 2013.
- [3] Corballis, M. C., "Left Brain, Right Brain: Facts and Fantasies." *PLOS Biology* 12(1): e1001467, 2014.
- [4] Herrmann, C. S., et al., "EEG oscillations: From correlation to causality." *International Journal of Psychophysiology* 103: 12-5, 2016.
- [5] Jahidin, A. H., et al., "Classification of intelligence quotient via brainwave sub-band power ratio features and artificial neural network." *Computer Methods and Programs in Biomedicine* 13 (1): 50-59, 2014.
- [6] Slegers, P. J. C., et al., "Lighting affects students' concentration positively: Findings from three Dutch studies." *Lighting Research & Technology* 45(2): 159-175, 2012.
- [7] *The Lighting Handbook*, IES 10th Edition, 2011.
- [8] William, Allison, et al., "Lighting Control in Commercial Buildings", *LEUKOS*, Vol 8 No.3, 2012.
- [9] H. Candra, M. Yuwono, R. Chai, A. Handojoseno, I. Elamvazuthi, H. T. Nguyen, and S. Su, "Investigation of window size in classification of eeg- emotion signal with wavelet entropy and support vectormachine," in Proc. IEEE 37th Annu. Int. Conf. Eng. Med. Biol. Soc., Conference Proceedings. IEEE, pp. 7253, 2015.
- [10] Cohen, M. X., "Analyzing Neural Time Series Data: theory and practice". Cambridge, Massachusetts London, England, The MIT Press, 2014.
- [11] Gockel, H. E., et al., "Specificity of the Human Frequency Following Response for Carrier and Modulation Frequency Assessed Using Adaptation." *Journal of the Association for Research Otolaryngology* 16(6): 747-762, 2015.
- [12] Reedijk, Susan A., Anne Bolders, and Bernhard Hommel. "The Impact of Binaural Beats on Creativity." *Frontiers in Human Neuroscience* 7 (9): 13: 786. *PMC*. Web. 15 Sept. 2018.
- [13] Gao, X., et al., "Analysis of EEG activity in response to binaural beats with different frequencies." *International Journal of Psychophysiology* 94(3): 399-406, 2014.
- [14] Argento, E., et al., "Augmented Cognition via Brainwave Entrainment in Virtual Reality: An Open, Integrated Brain Augmentation in a Neuroscience System Approach." *Augmented Human Research* 2(1): 3, 2017.

Improved Ibu Endah-Pak Henry

ORIGINALITY REPORT

17%

SIMILARITY INDEX

0%

INTERNET SOURCES

17%

PUBLICATIONS

0%

STUDENT PAPERS

PRIMARY SOURCES

- 1 Henry Candra, Mitchell Yuwono, Ardi Handojoseno, Rifai Chai, Steven Su, Hung T. Nguyen. "Recognizing emotions from EEG subbands using wavelet analysis", 2015 37th Annual International Conference of the IEEE Engineering in Medicine and Biology Society (EMBC), 2015
Publication 3%
- 2 Henry Candra, Mitchell Yuwono, Rifai Chai, Hung T. Nguyen, Steven Su. "EEG emotion recognition using reduced channel wavelet entropy and average wavelet coefficient features with normal Mutual Information method", 2017 39th Annual International Conference of the IEEE Engineering in Medicine and Biology Society (EMBC), 2017
Publication 2%
- 3 Henry Candra, Endah Setyaningsih, Jeanny Pragantha, Rifai Chai. "Improving Focus and Concentration in the Classroom while Studying with Lighting Arrangement and Brainwave Stimulation", 2018 8th IEEE 2%

International Conference on Control System, Computing and Engineering (ICCSCE), 2018

Publication

4

Jana Van Canneyt, Jan Wouters, Tom Francart.
"From Modulated Noise to Natural Speech:
the Effect of Stimulus Parameters on the
Frequency Following Response", Cold Spring
Harbor Laboratory, 2019

Publication

1 %

5

V. Sutha Jebakumari, D. Shanthi Saravanan, D.
Devaraj. "Seizure detection in EEG signal with
novel optimization algorithm for selecting
optimal thresholded offset Gaussian feature",
Biomedical Signal Processing and Control,
2020

Publication

1 %

6

Ayush Raj, S.M. Jaisakthi. "Analysis of Brain
Wave Due to Stimulus Using EEG", 2018
International Conference on Computer,
Communication, and Signal Processing
(ICCCSP), 2018

Publication

1 %

7

Anatolii Belousov, Terho Ojell-Järventausta,
Mila Bujić, Joseph Macey, Juho Hamari.
"Digitally-Induced Altered States of
Consciousness and Playful HCI: Future
Research Agenda of a Novel Perspective",
Companion Proceedings of the Annual

1 %

Symposium on Computer-Human Interaction in Play, 2023

Publication

8

Erwei Yin, Timothy Zeyl, Rami Saab, Dewen Hu, Zongtan Zhou, Tom Chau. "An Auditory-Tactile Visual Saccade-Independent P300 Brain-Computer Interface", International Journal of Neural Systems, 2016

Publication

9

Miguel Garcia-Argibay, Miguel A. Santed, José M. Reales. "Binaural auditory beats affect long-term memory", Psychological Research, 2017

Publication

10

"Table of contents", 2018 8th IEEE International Conference on Control System, Computing and Engineering (ICCSCE), 2018

Publication

11

Mohamed Taha, Dia Abualnadi, Omar Hasan. "Lightning Impulse Parameters Estimation using Maximum Likelihood Criterion", 2018 8th IEEE International Conference on Control System, Computing and Engineering (ICCSCE), 2018

Publication

12

Assaf Almog, M. Renate Buijink, Ori Roethler, Stephan Michel, Johanna H. Meijer, Jos H. T. Rohling, Diego Garlaschelli. "Uncovering

1 %

1 %

1 %

1 %

1 %

functional signature in neural systems via random matrix theory", PLOS Computational Biology, 2019

Publication

13

Kyungah Choi, Cheong Shin, Taesu Kim, Hyun Jung Chung, Hyeon-Jeong Suk. "Awakening effects of blue-enriched morning light exposure on university students' physiological and subjective responses", Scientific Reports, 2019

Publication

1 %

14

"Theory-Driven Approaches to Cognitive Enhancement", Springer Science and Business Media LLC, 2017

Publication

<1 %

15

Miskovic, Vladimir, and Andreas Keil. "Reliability of event-related EEG functional connectivity during visual entrainment: Magnitude squared coherence and phase synchrony estimates : Internal consistency of connectivity metrics", Psychophysiology, 2014.

Publication

<1 %

16

Jennifer Sorinas, Maria Dolores Grima, Jose Manuel Ferrandez, Eduardo Fernandez. "Identifying Suitable Brain Regions and Trial Size Segmentation for Positive/Negative

<1 %

Emotion Recognition", International Journal of Neural Systems, 2019

Publication

17

K. V. Suma, G. M. Lingaraju, P. A. Dinesh, R. Nivedha. "Electroencephalogram-Based Emotion Recognition Using a Particle Swarm Optimization-Derived Support Vector Machine Classifier", Critical Reviews in Biomedical Engineering, 2020

Publication

<1 %

18

A. Khanna, P.S. Dutta. "Tunable color temperature solid state white light source using flux grown phosphor crystals of Eu³⁺, Dy³⁺ and Tb³⁺ activated calcium sodium molybdenum oxide", Optical Materials, 2014

Publication

<1 %

19

A.J Susilo, G.S Sentosa, A Prihatiningsih. "Predicting the safety factor of ash impoundment against liquefaction", IOP Conference Series: Materials Science and Engineering, 2019

Publication

<1 %

20

Lely Hiryanto, Alfa Ryano Yohannis, Teny Handhayani. "Hand signature and handwriting recognition as identification of the writer using gray level cooccurrence matrix and bootstrap", 2017 Intelligent Systems Conference (IntelliSys), 2017

Publication

<1 %

Exclude quotes Off

Exclude matches Off

Exclude bibliography Off