

ISSN Print: 0976-6308

ISSN Online: 0976-6316

<http://www.iaeme.com/ijciet/index.asp>

**International Journal
of
Civil Engineering & Technology
(IJCIET)**



IAEME Publication
Plot : 03, Flat- S 1,
Poomalai Santosh Pearls Apartment
Plot No. 10, Vaiko Salai 6th Street
Jai Shankar Nagar, Palavakkam, Chennai- 600 041
Tamilnadu, India



Enter Search Keyword

[Online Paper Submission](#)

17950 Articles From 91 Journals

CALL FOR PAPER April - April 2020 ISSUE

New!

Submit an Article

Select Language ▾

- About IAEME
- Authors Information
- International Journals
- Processing Charges
- Quality of Journals
- Download
- Journal Subscription

Journal Links

- Home
- Aim and Scope
- Journal Description
- Subject Area
- Editorial Board/Review Board
- Publication Ethics and Malpractice Statement
- Plagiarism policy
- Abstracting and indexing
- Article workflow
- Paper Template
- Paper Preparation Guidelines
- Article Processing Charges
- Copyright
- Online Paper Submission
- Subscription
- Invitation to Reviewer
- FAQ
- Contact us

CALL FOR PAPER

- [CALL FOR PAPER MARCH - MARCH 2020 ISSUE](#)
- [CALL FOR PAPER APRIL - APRIL 2020 ISSUE](#)

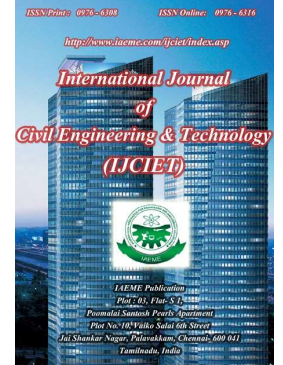
News

Journal Impact Factor (JIF)

2020 : 11.3296
2019 : 10.7810
2018 : 10.3547
2017 : 9.9845
2016 : 9.7820
2015 : 9.1215
2014 : 7.9290
2013 : 5.3277
2012 : 3.1861
2011 : 1.2000
2010 : 0.8515
Imprint: IAEME Publication
ISSN PRINT : 0976 - 6308
ISSN ONLINE : 0976 - 6316

INTERNATIONAL JOURNAL OF CIVIL ENGINEERING AND TECHNOLOGY (IJCET)

Journal ID : 2120-0203
11 Volumes 82 Issues 6221 Articles available from 2010 to 2020.
SJR Index journal- Scimago
Journal and Country Rank Link
Google Scholar Profile Link



Current Issue

Volume 11	Issue 4	April 2020	Link NEW
-----------	---------	------------	---------------------------------

Previous Issue

Volume 11	Issue 3	March 2020	Link
Volume 11	Issue 2	February 2020	Link
Volume 11	Issue 1	January 2020	Link
Volume 10	Issue 12	December 2019	Link
Volume 10	Issue 11	November 2019	Link
Volume 10	Issue 10	October 2019	Link
Volume 10	Issue 9	September 2019	Link
Volume 10	Issue 8	August 2019	Link
Volume 10	Issue 7	July 2019	Link
Volume 10	Issue 6	June 2019	Link
Volume 10	Issue 5	May 2019	Link
Volume 10	Issue 4	April 2019	Link
Volume 10	Issue 3	March 2019	Link
Volume 10	Issue 2	February 2019	Link
Volume 10	Issue 1	January 2019	Link
Volume 9	Issue 13	December 2018	Link
Volume 9	Issue 12	December 2018	Link
Volume 9	Issue 11	November 2018	Link
Volume 9	Issue 10	October 2018	Link
Volume 9	Issue 9	September 2018	Link
Volume 9	Issue 8	August 2018	Link
Volume 9	Issue 7	July 2018	Link
Volume 9	Issue 6	June 2018	Link
Volume 9	Issue 5	May 2018	Link
Volume 9	Issue 4	April 2018	Link
Volume 9	Issue 3	March 2018	Link
Volume 9	Issue 2	February 2018	Link
Volume 9	Issue 1	January 2018	Link
Volume 8	Issue 12	December 2017	Link
Volume 8	Issue 11	November 2017	Link
Volume 8	Issue 10	October 2017	Link
Volume 8	Issue 9	September 2017	Link
Volume 8	Issue 8	August 2017	Link
Volume 8	Issue 7	July 2017	Link

Issue) – International/National Journals **NEW**

March 3 2020
Call for Paper (March-2020 Issue) – International/National Journals **NEW**

February 25 2020
Scopus Accepted Journals **NEW**

October 1 2019
Google Scholar Citations **NEW**

January 16 2016
IAEME Journal Citation December 2015 **NEW**

[More](#)

Volume 8	Issue 6	June 2017	Link
Volume 8	Issue 5	May 2017	Link
Volume 8	Issue 4	April 2017	Link
Volume 8	Issue 3	March 2017	Link
Volume 8	Issue 2	February 2017	Link
Volume 8	Issue 1	January 2017	Link
Volume 7	Issue 6	November - December 2016	Link
Volume 7	Issue 5	September - October 2016	Link
Volume 7	Issue 4	July - August 2016	Link
Volume 7	Issue 3	May - June 2016	Link
Volume 7	Issue 2	March - April 2016	Link
Volume 7	Issue 1	January - February 2016	Link
Volume 6	Issue 12	December 2015	Link
Volume 6	Issue 11	November 2015	Link
Volume 6	Issue 10	October 2015	Link
Volume 6	Issue 9	September 2015	Link
Volume 6	Issue 8	August 2015	Link
Volume 6	Issue 7	July 2015	Link
Volume 6	Issue 6	June 2015	Link
Volume 6	Issue 5	May 2015	Link
Volume 6	Issue 4	April 2015	Link
Volume 6	Issue 3	March 2015	Link
Volume 6	Issue 2	February 2015	Link
Volume 6	Issue 1	January 2015	Link
Volume 5	Issue 12	December 2014	Link
Volume 5	Issue 11	November 2014	Link
Volume 5	Issue 10	October 2014	Link
Volume 5	Issue 9	September 2014	Link
Volume 5	Issue 8	August 2014	Link
Volume 5	Issue 7	July 2014	Link
Volume 5	Issue 6	June 2014	Link
Volume 5	Issue 5	May 2014	Link
Volume 5	Issue 4	April 2014	Link
Volume 5	Issue 3	March 2014	Link
Volume 5	Issue 2	February 2014	Link
Volume 5	Issue 1	January 2014	Link
Volume 4	Issue 6	November - December 2013	Link
Volume 4	Issue 5	September - October 2013	Link
Volume 4	Issue 4	July - August 2013	Link
Volume 4	Issue 3	May - June 2013	Link
Volume 4	Issue 2	March - April 2013	Link
Volume 4	Issue 1	January - February 2013	Link
Volume 3	Issue 2	July - December 2012	Link
Volume 3	Issue 1	January - June 2012	Link
Volume 2	Issue 2	July - December 2011	Link
Volume 2	Issue 1	January - June 2011	Link
Volume 1	Issue 1	January - December 2010	Link

EDITORIAL BOARD

Chief Editor

Dr. Kadhim Naief Kadhim

College of Engineering, Babylon University, IRAQ

Managing Editor

Dr. H.T.Basavarajappa

Department of Studies in Earth Science, University of Mysore, India

Associate Editors

Dr. V.Antony Joe Raja

Sri Muthukumaran Institute of Technology, India

Prof. B. Arthi Gandhimathi

IAEME Publication, India

Dr. N. Tamil Selvan

IAEME Publication, India

Er. D. S. Chengalvarayam

IAEME Publication, India

Copy Editors

Mr. K.Prasanth

IAEME Publication, India

Mr. T.Nagarajan

IAEME Publication, India

Editorial Board

Dr. Mariappan.P	TWAD BOARD, India.
Dr. Saleh Abd El-Aleem Mohammed El-Awney	Fayoum University, Fayoum, Egypt.
Dr. Yongwei shan	Oklahoma state university, USA.
Dr. Pei tang	JCMS, Inc- Mercerville, USA.
Dr. Najm alghazali	Babylon University, IRAQ.
Dr. Moises diaz-cabrera	University of Las Palmas de Gran Canaria, Spain.
Dr. Cristina T. Coquilla	PIMSAT Colleges Dagupan City, Philippines.
Dr. Ammar Al-Ojaili	Higher College of Technology / Muscat, Sultanate of Oman.
Dr. Mohsen Sherif	College of Engineering, UAE University, UAE.
Dr. Alireza bahrami	Islamic Azad University-Ahvaz Branch, Iran.
Dr. Fred Boadu	Duke University Durham, USA.
Dr. Mirko Mazza	Università della Calabria, Italia
Dr. Taha Ibrahim	Benha University, Egypt
Prof. Ragab Megahed Abd El-Naby	Benha University, Egypt
Prof. Fabio Mazza	University of Calabria, Italy
Dr. Ali Akbar Firoozi	Universiti Kebangsaan Malaysia, Malaysia
Dr. Wilson Udo Udo	University of Uyo, Nigeria
Er. Behnaz H. Zaribaf	Georgia Institute of Technology, Atlanta, GA, USA
Dr. Srijit Biswas	Manav Rachna International University, Faridabad, India
Dr. PL Meyyappan	Kalasalingam University, India
Prof. Anne Mary J	Vel Tech Dr. RR & Dr. SR University, Chennai,
Dr. Vikas Srivastava	Sam Higginbottom University of Agriculture Tech & Sciences, UP-India
Dr. A.Siva Sankar	KL University, India
Dr. P. Perumal	Vignan University, India
Prof. Gloria Terenzi	University of Florence, Italy
Dr. A. Vijayakumar	GMR Institute of Technology, Rajam, Andhra Pradesh, India
Dr. Satish kumar Moparthi	Kallam Haranadha Reddy Institute of Technology, Andhra pradesh, India
Dr. N.Sivakumar	SSN College of Engineering, Tamilnadu, India
Dr. Dr. Babu Rao Gudipudi	Narasaraopeta Engineering College, Andhra Pradesh, India
Dr. Mattia Rapa	Sapienza University of Rome, Italy
Dr. Valentine Yato KATTE	Higher Technical Teacher Training College (HTTTC) Bambili, Cameroon
Dr. Komal P.Mehta	ITM, Universe, Vadodara, Gujarat, India
Prof. Aamer Najim Abbas	Mustansiriyah University/College of Engineering/Water Resources Engineering Department, Iraq
Dr. T. Phani Madhavi	Narasaraopeta Engineering College, Andhra Pradesh, India
Er. Manish Venugopal	Project Manager, Randolph & Son Builders Inc., Pineville, NC, United States
Dr. Ruoyang Wu	Researcher, University of Utah, United States
Dr. Aboubakeur Boukhelkhal	University of Laghouat, Algeria

Reviewer Board

Dr. Ajit Kumar	Indira Gandhi National Open University (IGNOU), New Delhi, India
Dr. S. Robert Ravi	PSR Engineering College, Tamil Nadu, India
Dr. Syed Anisuddin	Caledonian College of Engineering, Sultanate of Oman
Dr. K. Ramu	JNTU College of Engineering, Kakinada, India
Dr. Anant Parghi	S.V.National Institute Of Technology, Gujarat, India.
Er. Sadam Hade Hussein	Universiti Tenaga Nasional, Malaysia
Dr. P.Muthupriya	Sri Krishna College of Technology, Coimbatore
Prof. Anuj Chandiwala	Chhotubhai Gopalbhai Institute of Technology Gujarat, India
Er. Ali Amer Karakhan	University of Baghdad, Iraq
Dr. S.Bhagavathi Perumal	R.M.K.College of Engineering and Technology, Tamilnadu, India
Dr. Sujatha Unnikrishnan	Christ Deemed to be University, Bangalore, India

[IJM](#) | [IJARET](#) | [IJCIET](#) | [IJMET](#) | [IJECE](#) | [IJEET](#) | [IJCET](#) | [IJITMIS](#) | [IJGM](#) | [IJARM](#) | [IJHRM](#) | [IJIPR](#) | [JCET](#) | [IJLIS](#) | [JECET](#) | [JEET](#) | [JCIET](#) | [JOM](#) | [JMET](#)
[Google Scholar](#) | [Thomson Reuters' Research ID](#) | [Call For Paper](#) | [Online Paper Submission](#) | [List of Journals](#) | [Subscription](#) | [Processing Fee](#)
[Home](#) | [About IAEME](#) | [Contact Us](#) | [Payment Policy](#)



IAEME
Publication



OPEN ACCESS
Online Paper Submission

Home | Site Map | Careers | Contact Us

Enter Search Keyword



17412 Articles From 86 Journals

CALL FOR PAPER January - January 2020 ISSUE



Submit an Article

About IAEME

Authors Information

International Journals

Processing Charges

Quality of Journals

Download

Journal Subscription

International Journal of Civil Engineering and Technology (IJCIET)

ISSN Print : 0976 - 6308

ISSN Online: 0976 - 6316

Volume 9, Issue 11 (2018)

Copyright ©IAEME, 2019

Bibliometrics

DownLoad (3 Weeks)	: 1871
DownLoad (6 Weeks)	: 2306
DownLoad (6 Months)	: 2667
DownLoad (1 Year)	: 2910



S.No	Article ID	Title of the Paper	Authors	Pages	Downloads	How to cite this article
201	IJCIET_09_11_201	PHOTOVOLTAIC DESIGN ON ROBOTIC MOBILE SURVEILLANCE SYSTEM IN IMPROVING SECURITY New! Download	"MUHAMMAD AKBAR SYAHBANA PANE, PHAK LEN EH KAN, AULIANA NASUTION, KHAIRUL SALEH, ALI IKHWAN, A. P. U. SIAHAAN, EKO HARIYANTO AND M. D. L. SIAHAAN "	2045 - 2053	11	View
202	IJCIET_09_11_202	WAVE AND CURRENT HYDRODYNAMICS STUDY AT BATANG AIR DINGIN RIVER MOUTH PADANG, INDONESIA New! Download	DALRINO, AGUSKAMAR, A. INDRA AND SYOFYAN, E.R	2054 - 2062	7	View
203	IJCIET_09_11_203	SHAKE TABLE TEST OF FLOATING CABLE-STAYED BRIDGE UNDER EARTHQUAKE EXCITATION DURING CONSTRUCTION WITH BALANCED CANTILEVER METHOD New! Download	SEPLIKAYADI, BAMBANG SUHENDRO, HENRICUSPRIYOSULISTYO AND AKHMADAMINULLAH,	2063 - 2081	11	View
204	IJCIET_09_11_204	THEORETICAL AND EXPERIMENTAL STUDY ON RICE HUSK GASIFICATION PROCESS ON CONTINUOUS - FLOW DOWNDRAFT GASIFIER ON INDUSTRIAL SCALE New! Download	DINH TUNG NGUYEN	2082 - 2093	15	View
205	IJCIET_09_11_205	SOCIO-LINGUISTIC METHODS FOR STUDYING VIRAL ADVERTISING New! Download	R. R. TOLSTYAKOV, I. A. YURINA, N. YU. BORODULINA and M. N. MAKEEVA	2094 - 2107	11	View
206	IJCIET_09_11_206	THE USE OF A DIODE LASER IN THE TREATMENT OF HEMORRHOIDAL DISEASE New! Download	N. K. ZHIZHIN, D. N. PANCHENKOV, V. V. KHARLAMOV, S. A. NIKITIN, A. YU. KRYLOVA, S. V. TITOV	2108 - 2112	8	View
207	IJCIET_09_11_207	AN EXTENSIVE EXAMINATION OF WATER QUALITY AND SOIL QUALITY CHARACTERISTICS IN FEW AREAS OF ANDHRA PRADESH CORE CAPITAL REGION AT AMARAVATI BY USING GIS APPLICATIONS New! Download	M.V. RAJU, K. MARIADAS, G.VENU RATNA KUMARI, M. SIVA JAGADISH KUMAR and S. RAMESH BABU	2113 - 2125	23	View
208	IJCIET_09_11_208	EFFECT OF PACKING DENSITY ON PROPERTIES OF SELF COMPACTING CONCRETE New! Download	P. N. NIMODIYA and H. S. PATEL	2126 - 2131	15	View
209	IJCIET_09_11_209	PRODUCTION OF BIOSURFACTANT USING CRUDE PALM OIL BY BACTERIA PSEUDOMONAS PUTIDA MTCC 2467 AND ITS APPLICATION IN IMPROVED OIL RECOVERY New! Download	RAJESH KANNA	2132 - 2138	8	View
210	IJCIET_09_11_210	VALUE CREATION MODEL AT PRIVATE UNIVERSITIES New! Download	FERRIAL P. SIRAIT, PAHAM GINTING., ENDANG S RINI and ARLINA N. LUBIS	2139 - 2156	9	View
211	IJCIET_09_11_211	DESIGN AND IMPLEMENTATION OF AUTOMATED PARCEL SORTING MECHANISM USING ARDUINO New! Download	SARAVANAN R, SATHESH RAAJ R, SUGANYA THEVI T, KASTHURI M, KARTHIKA K and ASHOK KUMAR S	2157 - 2163	10	View
		EFFECTIVE APPROACH TOWARDS ELEGANT, SMART AND GREEN CITY New! Download	POTHUPOGU SOUMYA and GOVIL			

212	IJCIET_09_11_212	PDF Abstract Reference	ALOK	2164 - 2169	13	View
213	IJCIET_09_11_213	STABILITY ANALYSIS OF EARTH DAM SLOPES SUBJECTED TO EARTHQUAKE USING ERT RESULTS INTERPRETATION New! Download PDF Abstract Reference	EKOANDISURYO, YULVIZAIKA and DESYSETYOWULAN	2170 - 2178	4	View
214	IJCIET_09_11_214	ECONOMICAL VALUE COMPARISON USING GENERATOR SETS, SOLAR POWER PLANTS AND RECHARGEABLE BATTERIES AS A BACKUP POWER SOURCE IN RESIDENTIAL HOME New! Download PDF Abstract Reference	HAMDANI HAMDANI, ZURAIDAH THARO, SITI ANISAH and SOLLY ARYZA	2179 - 2185	7	View
215	IJCIET_09_11_215	THROUGHPUT INTENSIFICATION FOR IOT BASED SUBVERSIVE DRAINAGE MONITORING APPLICATIONS IN WIRELESS SENSOR NETWORKS New! Download PDF Abstract Reference	ANITHA CHRISTY ANGELIN.P, DEVA PRIYA ISRAVEL and DIANA ARULKUMAR	2186 - 2196	7	View
216	IJCIET_09_11_216	MAJORIZATION PROBLEMS FOR SUBCLASSES OF ANALYTIC FUNCTIONS INVOLVING Q-CALCULUS OPERATOR New! Download PDF Abstract Reference	K.THILAGAVATHI, K.VIJAYA and K.UMA	2197 - 2202	6	View
217	IJCIET_09_11_217	THREE PHASE MULTILEVEL PULSE WIDTH MODULATION PWM FOR MINIMIZING THE LOSSES OF SWITCHING FREQUENCY New! Download PDF Abstract Reference	AMAL M. A. KADHIM	2203 - 2207	7	View
218	IJCIET_09_11_218	EFFECTS OF POLYPROPYLENE FIBERS ON COMPRESSIVE AND FLEXURAL STRENGTH OF CONCRETE MATERIAL New! Download PDF Abstract Reference	M. A. MASHREI, ALI A. SULTAN, ALAA M. MAHDI	2208 - 2217	8	View
219	IJCIET_09_11_219	STUDIES ON DURABILITY PROPERTIES OF HIGH STRENGTH SELF-COMPACTING CONCRETE –A REVIEW New! Download PDF Abstract Reference	C.CHANDANA PRIYA, M V SESHAGIRI RAO and V SRINIVASA REDDY	2218 - 2225	8	View
220	IJCIET_09_11_220	THE PARTICIPATION OF YOUTH OF WESTERN COUNTRIES IN POLITICAL LIFE OF THE SOCIETY, THE YOUTH IN THE POLITICAL LIFE OF THE SOCIETY New! Download PDF Abstract Reference	SERGEI PELEVIN, BAKTIBEK TAUBAEV, YERAZAK TILEUBERGENOV, ALEKSEI VASILIEV	2226 - 2233	11	View
221	IJCIET_09_11_221	YOUNG RUSSIAN WOMEN VIEW ON THE OBSTETRIC AID SYSTEM IN MATERNITY HOSPITALS OF THE RUSSIAN FEDERATION New! Download PDF Abstract Reference	NATALIA SHALYGINA, GALINA ERSHOVA, IRINA SNEZHKOVA	2234 - 2244	19	View
222	IJCIET_09_11_222	DESIGNING OF TACTILE MAP FOR BLIND PEOPLE IN KOREA New! Download PDF Abstract Reference	CHUNGWEON OH	2245 - 2251	5	View
223	IJCIET_09_11_223	VERMICOMPOSTING USING DIFFERENT SUBSTRATES OF ORGANIC WASTES: GROUND COFFEE AND ORANGE PEEL POWDER AS A POTENTIAL ELECTRIC GENERATION New! Download PDF Abstract Reference	PUTRI SHAREEN ROSMAN, TAVASURIA ELANGOVAN, MARYAM MOHAMMAD, HARINDER RAI SINGH and MOHAMAD RUSOP MAHMOOD	2252 - 2257	8	View
224	IJCIET_09_11_224	EXAMINATION OF STRUCTURAL MEMBERS OF AERIAL VEHICLES BY LASER ULTRASONIC STRUCTUROSCOPY New! Download PDF Abstract Reference	A. KRAVCOV, I.A. SHIBAEV, D.I. BLOKHIN, A.S. BYCHKOV, E.B. CHEREPETSKAYA, M.M. KRAPIVNOI and V.P. ZARUBIN	2258 - 2265	7	View
225	IJCIET_09_11_225	UTILIZATION OF TEXTILE SLUDGE IN MANUFACTURING E-BRICKS New! Download PDF Abstract Reference	B. PRIYADHARSHINI and M. KAVISRI	2266 - 2273	7	View
226	IJCIET_09_11_226	STRENGTH OF REINFORCED CONCRETE CORBELS – A PARAMETRIC STUDY New! Download PDF Abstract Reference	ASALA ASAAD DAWOOD, ALI KIFAH KADHUM, KHATTAB SALEEM ABDUL-RAZZAQ	2274 - 2288	22	View
227	IJCIET_09_11_227	STRUCTURAL BEHAVIOR AND MECHANICAL PROPERTIES OF FERROCEMENT SLAB PANELS INCORPORATING FIBERS New! Download PDF Abstract Reference	WISSAM D. SALMAN, HUDA M. MUBARAK AND MOHAMMED MAHMOOD	2289 - 2298	11	View
228	IJCIET_09_11_228	EXPERIMENTAL INVESTIGATION TENSILE PROPERTIES OF ROD METAL AA5182 UNDER WIDE RANGE OF STRAIN RATES New! Download PDF Abstract Reference	ASAAD KHUDHAIR HAMZAH, HAITHAM M. IBRAHIM AL-ZUHAIRI, AREEJ SAMI MAHDI AND HUSSAIN J.M. AL-ALKAWI	2299 - 2305	5	View
229	IJCIET_09_11_229	ASSESSMENT OF SOIL BANKS OF PART FROM SHATT AL-HILLA IN AL HILLA CITY / BABYLON GOVERNORATE New! Download PDF Abstract Reference	HAIDER ABAID SALOMY AL-AMAR, AMER ATYAH LAFTAH AL-KHALIDI AND AHMMED HASSAN HADI	2306 - 2315	3	View
		MANAGEMENT OF INVESTMENT AND CONSTRUCTION				

230	IJCIET_09_11_230	PROJECTS TO CHANGE THE URBAN ENVIRONMENT: INTERNATIONAL EXPERIENCE New! Download PDF Abstract Reference	VYACHESLAV ALEKSANDROVICH ZIMIN, SERGEY ALEKSANDROVICH KLYUCHNIKOV AND VALENTINA VASILYEVNA LUKYANOVA	2316 - 2324	7	View
231	IJCIET_09_11_231	CITY AND TAXES: STUDY OF THE CHARACTERISTICS OF REAL ESTATE TAXATION New! Download PDF Abstract Reference	KONSTANTIN VIKTOROVICH NOVOSELOV, TATYANA VLADIMIROVNA ZVEREVA, LARISA PETROVNA GRUNDEL, NADEZHDA IVANOVNA SANNIKOVA, SALMAN ABDUGANIEVICH KURBANOV and DENI DOKKAEVICH SAYDULAEV	2325 - 2330	8	View
232	IJCIET_09_11_232	PERCEPTION OF EDUCATIONAL INFORMATION IN THE PROCESS OF LEARNING OF CONSTRUCTION AND HUMANITARIAN UNIVERSITIES STUDENTS: COMPARATIVE ANALYSIS New! Download PDF Abstract Reference	PETR KUBRUSHKO, SERGEY SHISHOV, VALENTINA KALNEI, VITCHESLAV SCARAMANGA, NATALIA SHAFAZHINSKAYA, RAZIYAT RABADANOVA	2331 - 2337	6	View
233	IJCIET_09_11_233	ANALYSIS OF THE KAZAKH LEGISLATION CONCERNING THE STATE REGISTRATION OF RIGHTS TO IMMOVABLE PROPERTY AND THE STATE REAL ESTATE CADASTRE IN RELATION TO THE INTERNATIONAL STANDARD ISO 19152:2012 GEOGRAPHIC INFORMATION – LAND ADMINISTRATION DOMAIN MODEL New! Download PDF Abstract Reference	AIGERIM YESMAGANBETOVA, DINA DAUTKANOVA AND ORAZKUL DUISENBEKOVA	2338 - 2344	5	View
234	IJCIET_09_11_234	APPLICATION OF DEMOLISHED CONCRETE MATERIAL (DCM) IN CIVIL ENGINEERING STRUCTURES - A REVIEW New! Download PDF Abstract Reference	MOHAMMED ALI MOHAMMED AL-BARED, AZIMAH AYUB, NOR ZURAIRAHETTY MOHD YUNUS, INDRA SATI HAMONANGAN HARAHAP, AMINATON MARTO	2345 - 2352	9	View
235	IJCIET_09_11_235	INVESTIGATION ON IMPLEMENTATION OF PARAFFIN WAX IN BUILDING MATERIALS New! Download PDF Abstract Reference	S KIRUTHIKA, R JAGADHEESWARI, A OORKALAN AND N PRAKHASHM	2353 - 2362	4	View
236	IJCIET_09_11_236	LAW LIABILITY OF CONSTRUCTION FAILURE IN INDONESIA New! Download PDF Abstract Reference	ISMU GUNADI WIDODO, EDDY PRANJOTO W, JONAEDI EFENDI	2363 - 2371	9	View
237	IJCIET_09_11_237	DIGITAL ECONOMY: DATA ANALYSIS ON THE CONTEXT ADVERTISING MARKET IN THE UK AND THE US New! Download PDF Abstract Reference	ANDREI VIKTOROVICH PLOTNIKOV, PAVEL ALEXANDROVICH KUZNETSOV, ANNA ALEXANDROWNA URASOVA, ELVIR MUNIROVICH AKHMETSHIN	2372 - 2382	9	View
238	IJCIET_09_11_238	ANALYTICAL MODEL FOR PREDICTING STRESS-STRAIN BEHAVIOUR OF BACTERIAL CONCRETE New! Download PDF Abstract Reference	K SATYA SAI TRIMURTY NAIDU, M V SESHAGIRI RAO AND V SRINIVASA REDDY	2383 - 2393	5	View
239	IJCIET_09_11_239	MECHANICAL PROPERTIES OF GEOPOLYMER PERVIOUS CONCRETE New! Download PDF Abstract Reference	ANANDH BABU MALAYALI and RAMESH BABU CHOKKALINGAM	2394 - 2400	6	View
240	IJCIET_09_11_240	DYNAMIC OPTIMIZATION MODEL FOR UNWINDING YARN IN TEXTILE PRODUCTION: A SIMULATION STUDY New! Download PDF Abstract Reference	STANISLAV PRAČEK	2401 - 2410	4	View
241	IJCIET_09_11_241	MECHANICAL PROPERTIES OF REACTIVE POWDER CONCRETE UNDER DIFFERENT CURING CONDITIONS AND STEEL FIBERS New! Download PDF Abstract Reference	S. M. SHELAKE, D. D. MOHITE, C. P. PISE, S. S. KADAM, G. D. LAKADE AND Y. P. PAWAR	2411 - 2419	4	View
242	IJCIET_09_11_242	TOTAL SUSPENDED SOLIDS AND VOLATILE ORGANIC COMPOUNDS IN THE AIRSHED OF A RECONSTRUCTED ROAD ALONG LAGOS-IBADAN EXPRESS WAY New! Download PDF Abstract Reference	FAKINLE BAMIDELE SUNDAY, ONI OLUFEMI SUNDAY, OLALEKAN ABIODUN PAUL, SONIBARE JACOB ADEMOLA, OKEDERE OYETUNJI BABATUNDE and ODUNLAMI OLAYEMI ABOSEDE	2420 - 2427	6	View
243	IJCIET_09_11_243	A STUDY OF LEGAL AND ECONOMIC MECHANISMS OF THE DEVELOPMENT OF TRANSPORT IN METROPOLISES New! Download PDF Abstract Reference	A. CHEBOTAREVA, V. E. CHEBOTAREV AND E. I. DANILINA	2428 - 2436	5	View
244	IJCIET_09_11_244	PROBLEM OF TECHNOGENIC SOCIETY DYNAMICS UNDER THE CONDITIONS OF CONTEMPORANEITY New! Download PDF Abstract Reference	SERGEI IGOREVICH PELEVIN, BAKTIBEK DZHUBANDIKOVICH TAUBAEV AND IGOR SPARTAKOVICH BAKLANOV	2437 - 2443	8	View
245	IJCIET_09_11_245	UNIVERSITY AND CITY: EVOLUTION AND SOCIO-ECONOMIC FEATURES OF DEVELOPMENT New! Download PDF Abstract Reference	EKATERINA ALEXANDROVNA POGREBINSKAYA, NATALIA YUREVNA ZUBENKO AND NATALIA SERGEEVNA MURDHOJAEVA	2444 - 2451	5	View
246	IJCIET_09_11_246	ANALYSIS OF INVESTMENT ACTIVITIES OF NONSTATE PENSION FUNDS New! Download PDF Abstract Reference	SVETLANA ANATOLIEVNA KHMELEVSKAYA, IRINA URIEVNA ORLOVA AND DMITRII NIKOLAYEVICH ERMAKOV	2452 - 2459	8	View
247	IJCIET_09_11_247	THE TRUSS STRUCTURE SYSTEM New! Download PDF Abstract Reference	FERMANTO LIANTO, RUDY TRISNO AND SIDHI WIGUNA	2460 - 2469	12	View

248	IJCIET_09_11_248	MODERN PROCESSES OF HUMAN CAPITAL CONCENTRATION IN THE METROPOLITAN CITIES New! Download	EKATERINA KONSTANTINOVNA SAMRAILOVA, ELENA ALEXANDROVNA MARYGANOVA, OLGA VASILIEVNA BALANDINA, SERGEY ALEKSANDROVICH SHAPIRO AND ULYANA ANATOLYEVNA NAZAROVA	2470 - 2476	9	View
		PDF Abstract Reference				
249	IJCIET_09_11_249	DICHOTOMOUS AND SEMANTIC TREES New! Download	V.YA. TSVETKOV, R.G. BOLBAKOV AND A.V. SINICYN	2477 - 2485	6	View
		PDF Abstract Reference				
250	IJCIET_09_11_250	CREATING PUBLIC SPACE IN CITIES CONSIDERING PEOPLE WITH SPECIAL NEEDS New! Download	TATIANA EVGENEVNA TROFIMOVA AND ALEXANDER NIKOLAEVICH RODIONOVSKIY	2486 - 2492	4	View
		PDF Abstract Reference				

Pages 1 | 2 | 3 | 4 | 5 | 6 | 7 |

IJM | IJARET | IJCIET | IJMET | IJECET | IJEET | IJCET | IJITMIS | IJGM | IJARM | IJMHRM | IJIPR | JCET | IJLIS | JECET | JEET | JCIET | JOM | JMET
 Google Scholar | Thomson Reuters & Research ID | Call For Paper | Online Paper Submission | List of Journals | Subscription | Processing Fee
 Home | About IAEME | Contact Us | Payment Policy



THE TRUSS STRUCTURE SYSTEM

Fermanto Lianto

Department of Architecture, Tarumanagara University, Jakarta 11440, Indonesia

Rudy Trisno

Department of Architecture, Tarumanagara University, Jakarta 11440, Indonesia

Sidhi Wiguna Teh

Department of Architecture, Tarumanagara University, Jakarta 11440, Indonesia

ABSTRACT

In line with the development of architectural works that are increasingly widespread and diverse in form, it requires the support of the right building structure system. The truss structure system as one of the commonly used structural systems has many variations and types. This study uses a literature study method on the truss structure system and discusses its application to several buildings to determine the various types of truss structure systems that exist. From the discussion it was found that the truss structure system was developed from simple basic forms by forming systems of truss frame structure, truss space structure and space frame structure.

Key words: Structure System, Truss Frame Structure, Truss Space Structure, Space Frame Structure

Cite this Article: Fermanto Lianto, Rudy Trisno and Sidhi Wiguna, the Truss Structure System, International Journal of Civil Engineering and Technology, 9(11), 2018, pp. 2460–2469

<http://www.iaeme.com/IJCIET/issues.asp?JType=IJCIET&VType=9&IType=11>

1. INTRODUCTION

In line with the development of architectural works that are increasingly widespread and diverse in form, it requires the support of the right building structure system. The architects seem to be competing to produce very diverse works. This is a challenge for structural system experts to realize these architectural works. With the help of sophisticated computer software, and the “courage” of structural experts to “get out” of the general rules, it allows the use of structural systems that can realize the “dreams” of architects with varied building forms [1].

This study will discuss one of the many existing structural systems, namely the truss structure system, especially on the roof cover frame. The truss structure system starts from the simplest structural form of system to hold the load, namely the system of truss frame structure

that forms a united, then to hold a greater load the truss frame structure system forms a space to increase its strength, thereafter, to become a space frame structure that is able to stretch into a larger space as a wide span structure with free column in the center. The purpose of this paper is to know and understand the system of truss structures in buildings that are commonly used primarily for the function of the roof cover frame of the building.

2. MATERIAL AND METHODS

2.1. Methods of Study

This study uses a literature study method on frame structure systems and discusses its application to several buildings to find out the various types of existing truss structure systems that are grouped into systems of truss frame structure, truss space structure, and space frame structure.

2.2. TRUSS STRUCTURE SYSTEM

The building structure system is defined as a means to channel the burden of buildings from the top (roof) to the ground or as a collection of objects that have the same characteristics that are connected to each other in a certain way so that the whole system is able to function simultaneously in carrying and channeling loads horizontally or vertically [2].

To construct a building, it requires a truss structure that can carry all the burdens that work on the building and forward them to the supporting soil layer. One of the structure system that can be used is a frame structure system. The most basic and commonly used truss structure system is the truss frame structure system.

Andrea Palladio (1518-1580) an Italian architect, gave a description of the system of truss structures with a series of correct triangular patterns in carrying loads [2]. After that, the truss structure system began to be used in building constructions. Due to the increasing need for transportation facilities such as bridges, the potential of the truss structure system began to be developed in the nineteenth century (Figure 1).

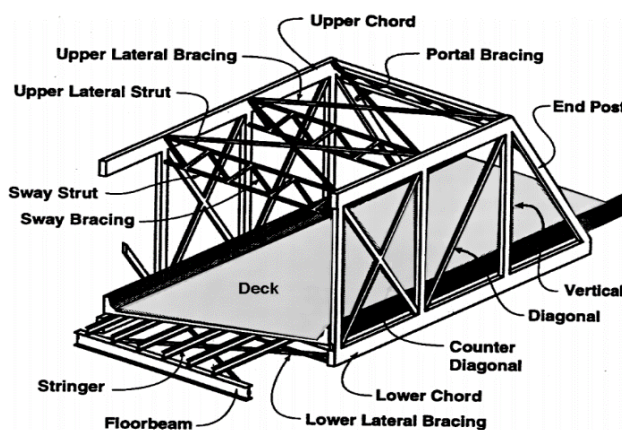


Figure 1 Model of the Truss Structure System on the Bridge.

Source: Chen & Duan, 2000 [3]

3. RESULTS AND DISCUSSION

3.1. BASIC FORMATION OF THE TRUSS STRUCTURE SYSTEM

The main principle of the truss structure system is the arrangement of the rod forming a triangular configuration, because the triangular shape (triangulation) is a good or stable form in making a balance to direct the load bearing into a normal truss force, namely compressive and tensile loads. Whereas the load acting on the truss shape which is not triangular with the joint laying system causes the structure to become unstable and will result in relatively large deformations. If the triangular arrangement of the rod has a stable shape, then any triangle arrangement also forms a sturdy and stable structure system (Figure 2). In a stable structure, the external force causes a force acting on the rod which are the tensile force and compressive force [2].

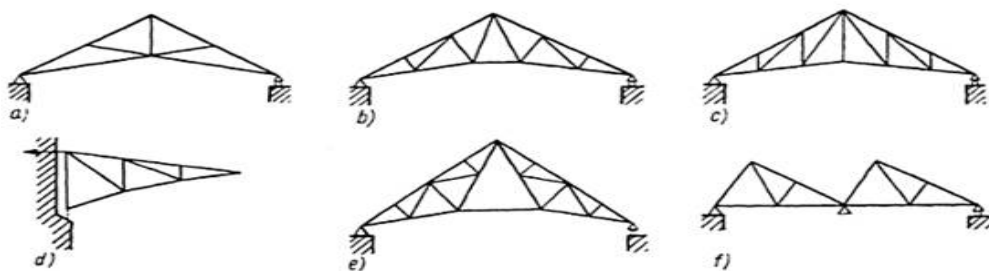


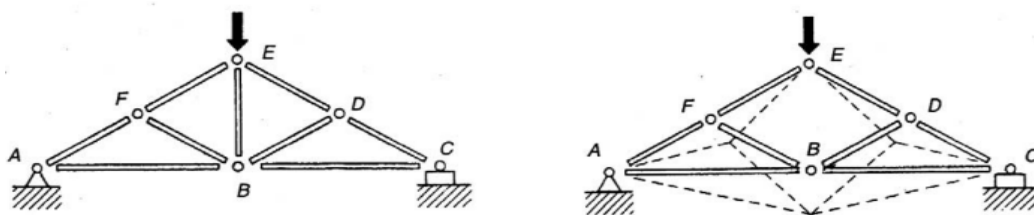
Figure 2 Basic Principles of Triangulation and systems of truss joints.

Source: <https://rebanas.com/gambar/images/rangka-batang-cremona-3-contoh-1-diketahui-konstruksi-gambar-jembatan>, Retrieved on November 22, 2018 [4]

3.2. PRINCIPLES OF THE TRUSS STRUCTURE SYSTEM

3.2.1. Stability of the Truss Structure System

Each truss structure is a stable arrangement of triangular shape (Figure 3a) so that it cannot change shape or collapse. A collapse will occur if the truss structure is unstable (not forming a triangular pattern) under the burden (Figure 3b).



(a)The stable truss the frame occurs in a truss pattern that is entirely triangular

(b)Unstable rod frames occur in a triangular area (BDEF point), the truss will change shape when subjected to loads and the truss can collapse

Figure 3 Basic Principles of Triangulation of Stable and Unstable Frame Structures.

Source: Schodek, 2001:140-141 [2]

In a stable truss structure, deformation is relatively small and is associated with changes in rod length caused by forces arising in the rod as a result of external loads. The force acting inside the rod is a pure tensile and compressive force. While bending will not occur as long as the external force is at the vertex.

3.2.2. Truss Force

The forces acting on the trunks of the truss structure are distributed in each of the forming rod to the fulcrum, so that there is a rod that accepts the tensile force and compressive force.

The method used to determine the forces acting on the truss is based on a review of balance at the connecting point. In a simple trunk configuration, the nature of the force of the tensile or compressive can be determined by giving an idea of how the truss carry the load, for example by giving a picture of the shape of deformation that might occur when the structure is given a load [5].

3.2.3. Truss Design

The truss structure system has many variations in shape. Determining of rod configuration is the initial stage in designing the frame structure, before the rod style analysis process and determining the size of each structural element in a building so that the trunk configuration will be used in accordance with the shape of the designed building. Some forms of system configuration for truss structures are commonly used as shown in Figure 4. These configurations are influenced by external factors both in terms of structural and construction [6].

This truss structure system is very flexible to follow the shape of the building so that its use is very large and varies both in terms of the truss structure system, dimensions and profile of the rod and the building materials used. Likewise, a system of connections or joints between rods can be carried out in several ways such as the connection of bolts joints, weld joints or by using certain systems such as *unistrut* systems, *mero* systems and so on. In addition, the truss structure system can be displayed in its entirety as an element of building aesthetics by showing the honesty of its truss structure system.

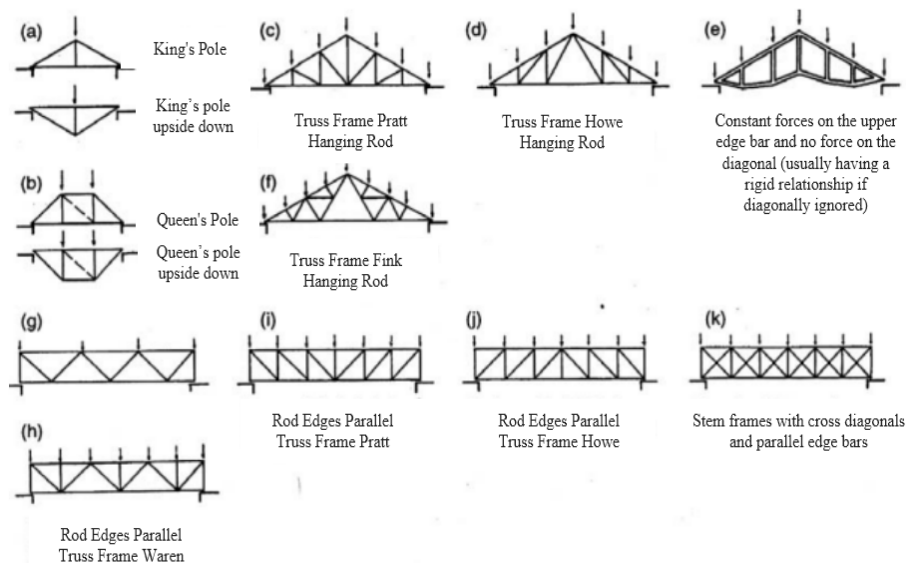


Figure 4 Types of Truss Structure System

Source: Schodek, 2001 [2]

3.2.4. The Height of Truss Structure

The total volume of the truss structure is strongly influenced by the height of the truss structure itself. The higher a truss structure, the greater the volume of the truss structure, and vice versa. In general, the angles formed by diagonal rod with horizontal lines range from 30° - 60° with an ideal angle of 45°. The following are simple guidelines for determining the height of the truss structure as an initial guideline (rule of thumb) but not as a final design (Table 1) [6]:

Table 1 Rule of Thumb for The Height of Truss Structure

Type of Truss Structure	Height
Truss structure with relatively light loads and close distances	1/20 from the long of the span
The secondary collector rod frame that carries the reaction produced by another truss frame	1/10 from the long of the span
The frame of the primary collector rod which carries a very large load, for example: truss frame which carries column loads from multi-storey buildings	1/4 or 1/5 from the long of the span

Source: Ariestadi, 2008:191 [6]

3.2.5. The Use of Cable Material for Pulling Rod in Truss Structure

Cable material elements are only capable of carrying tensile load. Physically this element is usually in the form of a small section of steel rod or wires. This element is unable to carry compressive loads (Figure 5). Elements that only carry a tensile load can have a smaller cross section compared to the elements that carry compressive loads.

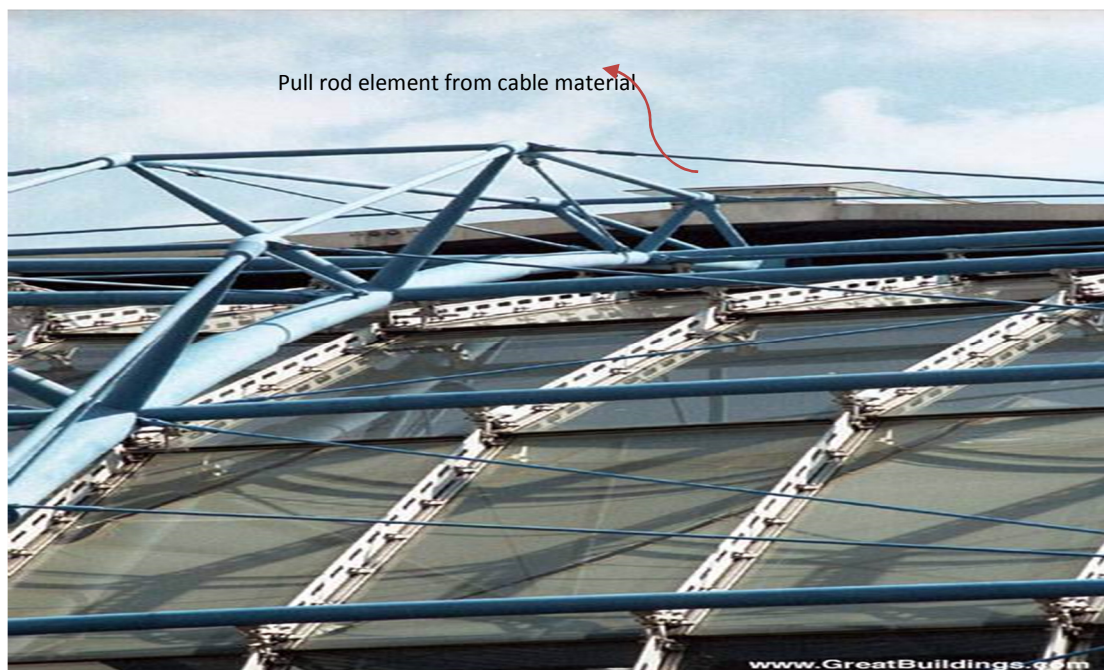


Figure 5 The Use of Cable Material for Pulling Rod in Truss Structure

Source: www. GreatBuildings.com, Retrieved on September 26, 2018 [7]

3.3. Types of truss structure SYSTEM

The truss structure system is a truss structure system made by connecting straight structural elements (rods) with joints (flexible joints) at both ends. The truss structure is composed of rod that experience tensile force and rod that experience compressive forces and are in a tensile and compressive force balance so that the construction is stable in holding the load.

3.3.1. The Truss Frame Structure System

The truss frame structure system is a series of rod that form one field and are in a tensile and compressive force balance that rests on a particular fulcrum (Figure 6, 7).

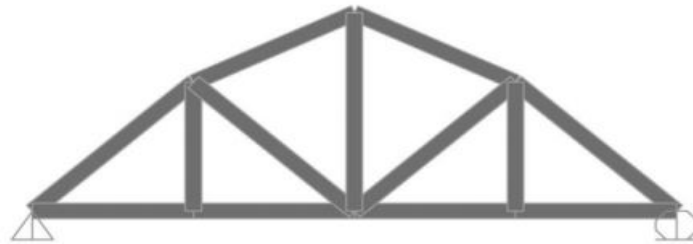


Figure 6 The Truss Frame Structure System

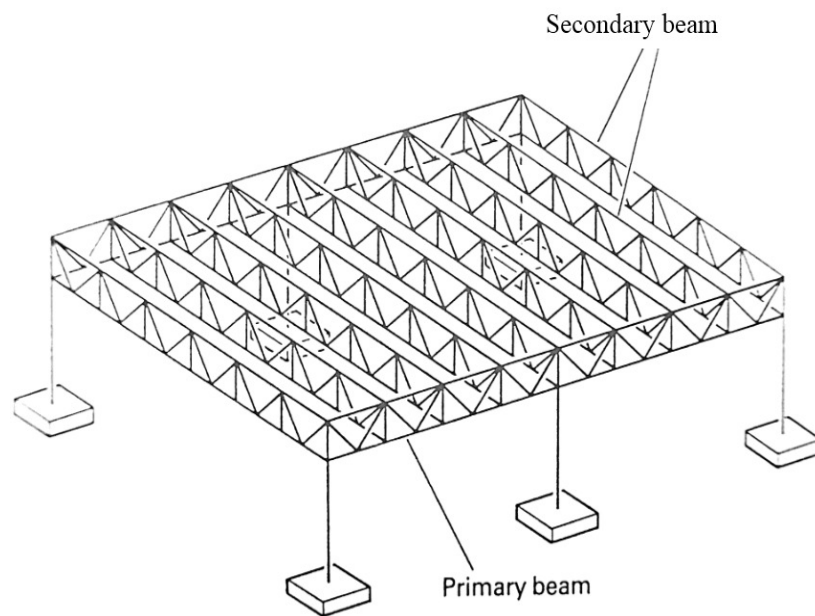


Figure 7 the Example of the Truss Frame Structure System

Source: https://lh3.googleusercontent.com/daJaGR2D7jrutvtimN7Oj2dNMJ_jXESiENbtjCrs-pv9pYYMf2vsM5Qmew_VLGwz3t9MoA=s122, Retrieved on September 26, 2018 [8]

3.3.2. The Truss Space Structure System

The truss space structure system is a series of truss frame structure that are combined into one unit to form a space and rest on a particular fulcrum (Figure 8, 9).

The Truss Structure System

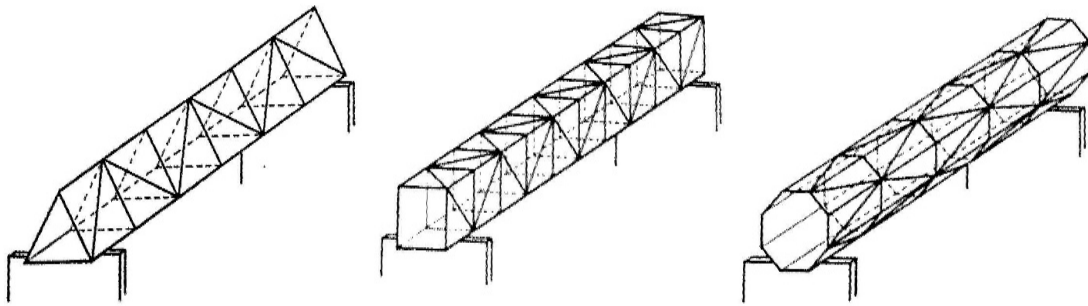


Figure 8 The Truss Space Structure System

Source: <https://lh3.googleusercontent.com/yVsIpecMfd1buI2xyNaHf4oAtmGbbHM9fS1DDJ078EuRVKKKuPeJtxbfvBQHIsvLmwF8qQ=s85>, Retrieved on September 26, 2018 [8]



Figure 9 The Example of Truss Space Structure System, Kansai Airport, Osaka, Japan.

Source: <https://www.barthe.net/jgallery/airport.htm>, Retrieved on September 26, 2018 [9]

3.3.3. Space Frame Structure System

Space frame structure is a series of truss space structure that are combined into one unit to form space and rest on a particular fulcrum. This space frame structure has the ability to cover large/wide spaces and free columns in the center (Figure 10).



Figure 10 the Example of Space Frame Structure on the Roof of a Building in Taman Mini Indonesia Indah, Indonesia

Source: Private Document, 2014

The stability that exists in the pattern of triangular rod can be expanded into three dimensions. In the truss frame structure, a simple triangular shape is the basis, while the basic shape of the space frame structure is the tetrahedron (Figure 11).

The principles discussed in the analysis of truss frame structure generally can be applied to space frame structures. Stability is the main requirement where the forces arising in space frame structure can be obtained by reviewing the balance of space in the space rod pieces [6].

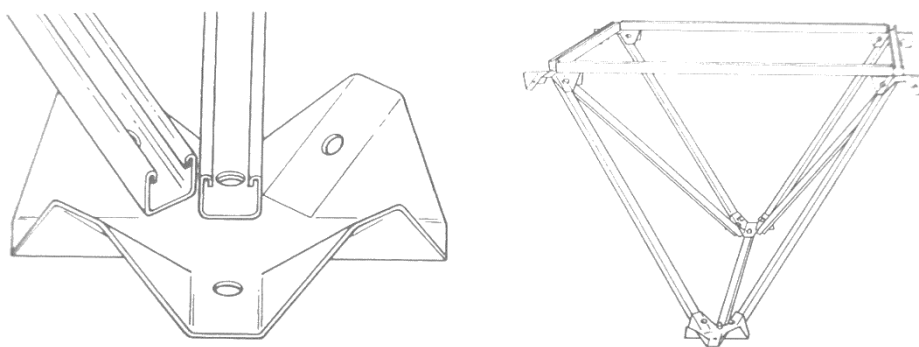


Figure 11 Detail Example of the Connection Joints in Space Frame Structure as Known as *Unistruf* System

Source: Schodek, 2001 [2]

Space frame structure is also known as Space Frame System. One type of Space frame system that is quite well known is a space frame construction system using a joint between one

rod and another using a ball (ball joint) as a joint in the form of triangular modules, so that Space Frame is easy to install, mold, dismantle, and the implementation can be done quickly.

This system is called the *mero* system, which consists of pipe-shaped rod with bolts at the end and are connected to ball that has 16 holes to insert the rod.

This causes the *mero* system have a very wide variation for arranging the trunks in the ball to follow the desired shape of the building (Figure 12). Likewise, variations in the length of the stems will make the shapes that occur vary.

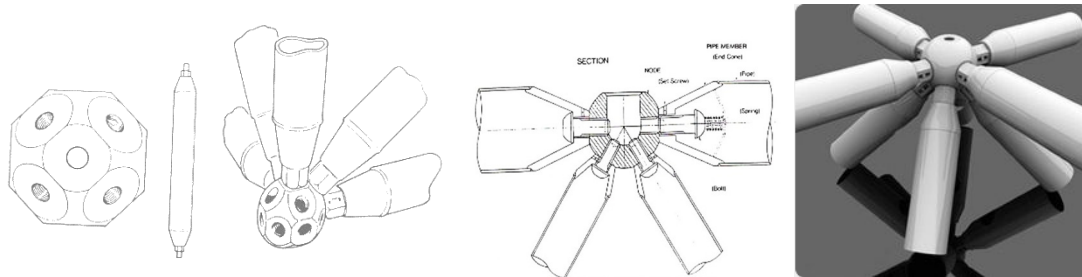


Figure 12 Detail Example of the Connection Joints in Space Frame Structure as Known as *Mero* System

Source: Schodek, 2001 [2] and <https://www.pinterest.com/pin/386817055472550908/>, Retrieved on September 26, 2018 [10]

4. CONCLUSION

The basis for the formation of a system of truss structure (especially joints or flexible joints in the truss) is the basic shape of the triangle (triangulation) of the arrangement of linear rod in the balance of tensile and compressive forces, forming a truss frame structure system. Then to increase the strength in carrying the external load and the length of the stretch (distance between supports), a truss structure is formed to create a space into a truss space structure. Furthermore, to further increase strength and stiffness, a system of truss space structure is combined into a space frame structure system that is able to cover a large space and free column in the middle (wide span structure).

The truss structure system is very flexible in following the shape of the building so that its use is very wide and varied, both in terms of the structure, dimensions, and profiles of the truss and building structure materials, so that the truss structure plays an important role in realizing the design forms of architects especially roof construction to maintain the strength, robustness and stability of the building.

REFERENCES

- [1] Lianto, Fermanto. 2013, Building Structure System of Chinese Architecture, Past and Present, Civil Engineering Journal 4(1), pp. 63-80. March 2013. ISSN 2089-9513, <http://untar.ac.id/pasca/publication/>
- [2] Schodek, Daniel L. 2001. Structure. 4th ed. Englewood Cliffs, NJ: Prentice Hall
- [3] Chen, Wai-Fah & Duan, Lian. 2000. Bridge Engineering Handbook. Boca Raton: CRC Press
- [4] <https://rebanas.com/gambar/images/rangka-batang-cremona-3-contoh-1-diketahui-konstruksi-gambar-jembatan>, retrieved on November 22, 2018
- [5] Ariestadi, Dian. 2008. Teknik Struktur Bangunan. Jilid 3, Jakarta: Direktorat Pembinaan Sekolah Menengah Kejuruan. Direktorat Jendral Manajemen Pendidikan Dasar dan Menengah. Departemen Pendidikan Nasional
- [6] Ariestadi, Dian. 2008. Teknik Struktur Bangunan. Jilid 2, Jakarta: Direktorat Pembinaan Sekolah Menengah Kejuruan. Direktorat Jendral Manajemen Pendidikan Dasar dan Menengah. Departemen Pendidikan Nasional
- [7] [www. GreatBuildings.com](http://www.GreatBuildings.com), Retrieved on July 2, 2011
- [8] <https://lh3.googleusercontent.com>, Retrieved on September 26, 2016
- [9] <https://www.barthe.net/jgallery/airport.htm>, Retrieved on, September 26, 2016
- [10] <https://www.pinterest.com>, Retrieved on September 26, 2018



Scimago Journal & Country Rank

Enter Journal Title, ISSN or Publisher Name

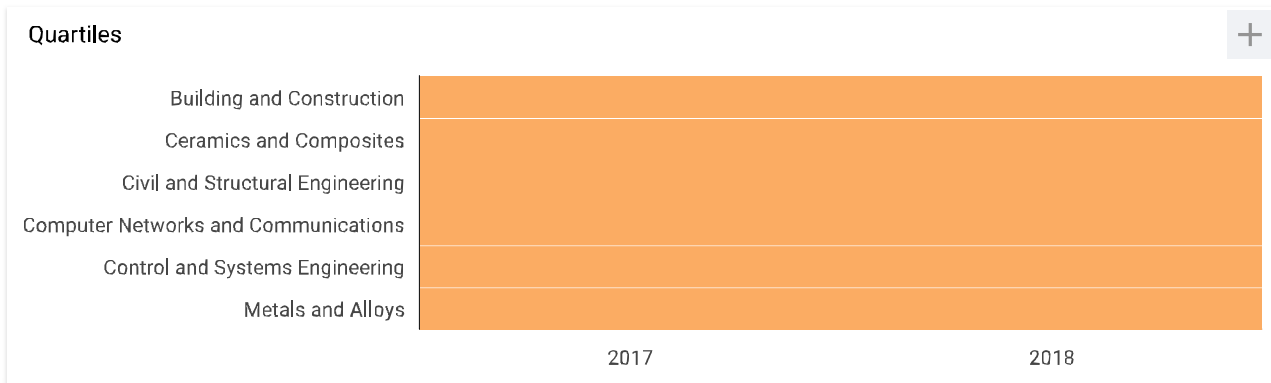
- Home
- Journal Rankings
- Country Rankings
- Viz Tools
- Help
- About Us

International Journal of Civil Engineering and Technology

18

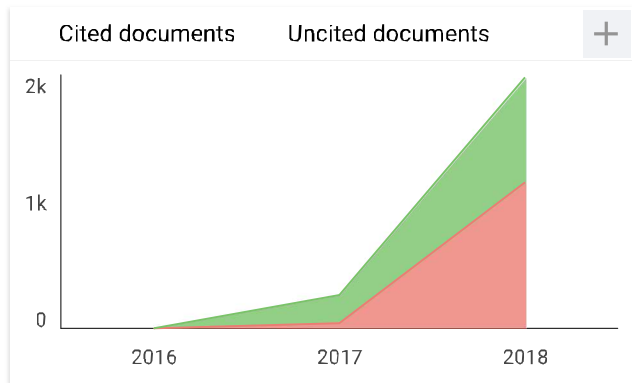
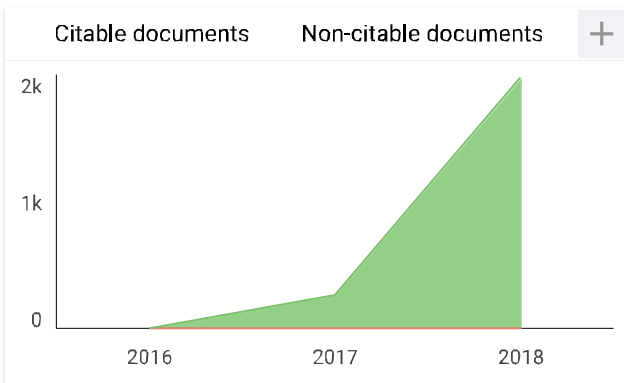
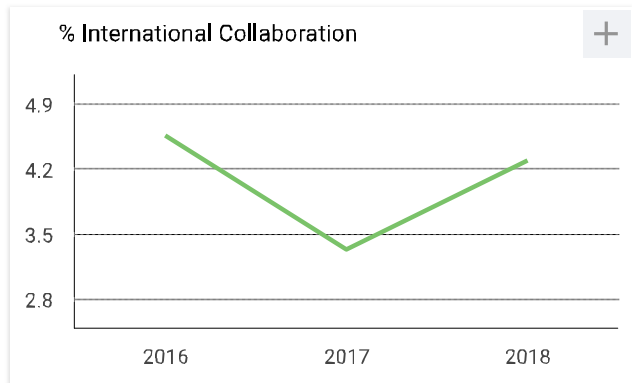
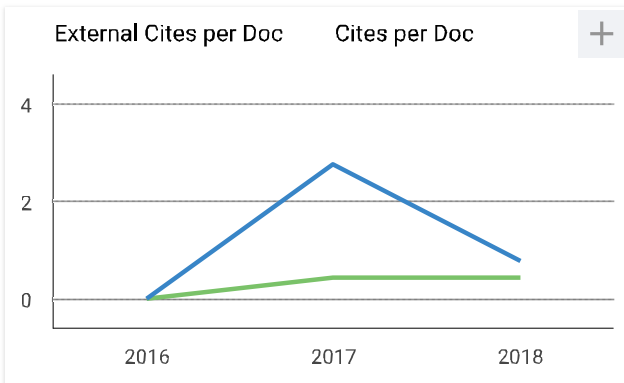
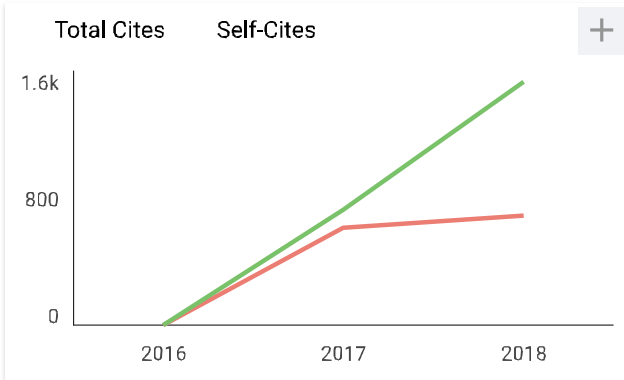
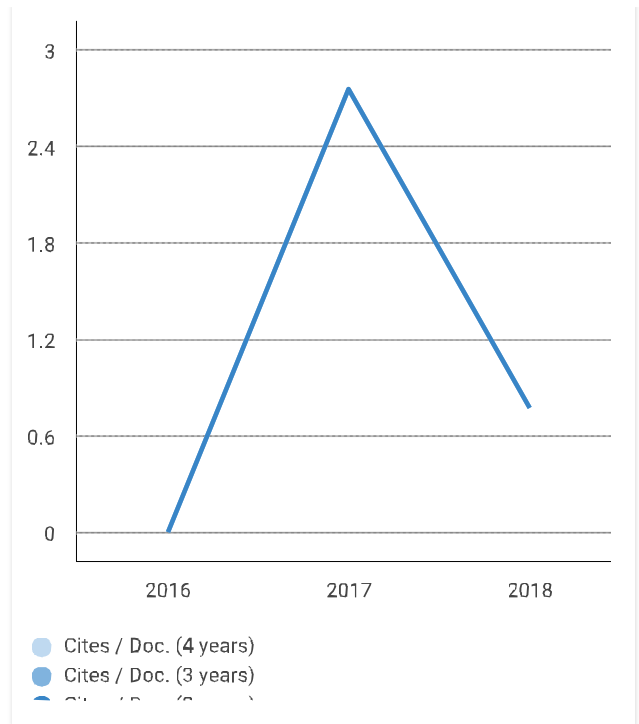
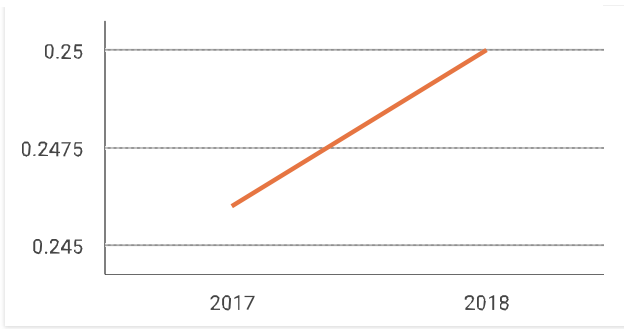
H Index

Country	India - SIR Ranking of India
Subject Area and Category	<p>Computer Science Computer Networks and Communications</p> <p>Engineering Building and Construction Civil and Structural Engineering Control and Systems Engineering</p> <p>Materials Science Ceramics and Composites Metals and Alloys</p>
Publisher	IAEME Publication
Publication type	Journals
ISSN	09766308, 09766316
Coverage	2016-ongoing
Scope	International Journal of Civil Engineering and Technology (IJCET) is a peer-reviewed, open access journal that publishes original research articles and review articles in all areas of civil engineering. The Journal is a peer-reviewed journal, aims to provide the most complete and reliable source of information on recent developments in civil engineering. The journal provides a forum for the International Civil Engineering Community to present and discuss matters of major interest e.g. new developments in civil regulation.
	<p> Homepage</p> <p>How to publish in this journal</p> <p>Contact</p> <p> Join the conversation about this journal</p>



SJR

Citations per document



International Journal of Civil Engineering and Technology

Q3 Building and Construction
best quartile

SJR 2018
0.25

powered by scimagojr.com

← Show this widget in your own website

Just copy the code below and paste within your html code:

```
<a href="https://www.scima
```



Source details

International Journal of Civil Engineering and Technology

Scopus coverage years: from 2016 to 2019

(coverage discontinued in Scopus)

Publisher: IAEME Publication

ISSN: 0976-6308 E-ISSN: 0976-6316

Subject area: Engineering: Building and Construction Engineering: Civil and Structural Engineering

Computer Science: Computer Networks and Communications

Engineering: Control and Systems Engineering

CiteScore 2017

2.76

Add CiteScore to your site

SJR 2018

0.250

SNIP 2018

0.310

- [View all documents >](#)
- [Set document alert](#)
- [Save to source list](#)
- [Journal Homepage](#)

- [CiteScore](#)
- [CiteScore rank & trend](#)
- [CiteScore presets](#)
- [Scopus content coverage](#)

CiteScore 2017

Calculated using data from 30 April, 2018

$$2.76 = \frac{\text{Citation Count 2017}}{\text{Documents 2014 - 2016}^*} = \frac{723 \text{ Citations } >}{262 \text{ Documents } >}$$

*CiteScore includes all available document types [View CiteScore methodology >](#) [CiteScore FAQ >](#)

Metrics displaying this icon are compiled according to Snowball Metrics [↗](#), a collaboration between industry and academia.

CiteScore rank ⓘ

Category	Rank	Percentile
Engineering Building and Construction	#20/161	87
Engineering Civil and Structural Engineering	#36/270	86

[View CiteScore trends >](#)

About Scopus

- [What is Scopus](#)
- [Content coverage](#)
- [Scopus blog](#)
- [Scopus API](#)
- [Privacy matters](#)

Language

- [日本語に切り替える](#)
- [切换到简体中文](#)
- [切换到繁體中文](#)
- [Русский язык](#)

Customer Service

- [Help](#)
- [Contact us](#)

